



Australian
Silica Quartz
Group Ltd

A photograph of a large, light-colored rock formation in a landscape with green trees and a cloudy sky. The rock formation is in the foreground, and the background shows a vast, open landscape with green trees and a cloudy sky.

ANNUAL REPORT 2025

Corporate Information

ABN 72 119 699 982

DIRECTORS

Robert Nash – Non-Executive Chairman
Luke Atkins – Non-Executive Director
Neil Lithgow – Non-Executive Director
Pengfei Zhao – Non-Executive Director

CHIEF EXECUTIVE OFFICER & COMPANY SECRETARY

Sam Middlemas

CHIEF FINANCIAL OFFICER

Patrick Soh

REGISTERED OFFICE

Suite 10, 295 Rokeby Road
SUBIACO WA 6008
Telephone +61 8 9200 8200
Facsimile +61 8 9200 8299
Email: admin@asqg.com.au
Web: www.asqg.com.au

SHARE REGISTRY

Automatic Group
Level 2, 267 St Georges Terrace
PERTH WA 6000
GPO Box 5193 (all correspondence)
SYDNEY NSW 2001
Phone 1300 288 664 (within Australia)
International +61 (0)2 9698 5414

AUDITORS

Moore Australia Audit (WA)
Level 15, 2 The Esplanade
PERTH WA 6000
Telephone +61 8 9225 5355
Facsimile +61 8 9225 6181

STOCK EXCHANGE LISTING

ASX Code: ASQ



Contents

CORPORATE INFORMATION	1
CHAIRMAN'S LETTER TO SHAREHOLDERS 2025	2
REVIEW OF ACTIVITIES	4
MINERAL RESOURCES AND ORE RESERVES	14
DIRECTORS' REPORT	17
AUDITOR'S INDEPENDENCE DECLARATION	28
STATEMENT OF PROFIT OR LOSS AND OTHER COMPREHENSIVE INCOME	29
STATEMENT OF FINANCIAL POSITION	30
STATEMENT OF CHANGES IN EQUITY	31
STATEMENT OF CASH FLOW	32
NOTES TO THE FINANCIAL STATEMENTS	33
CONSOLIDATED ENTITY DISCLOSURE STATEMENT	53
DIRECTORS' DECLARATION	54
INDEPENDENT AUDIT REPORT	55
ASX ADDITIONAL INFORMATION	59

Chairman's Letter to Shareholders 2025

Dear Shareholders,

On behalf of the Board, it is my pleasure to write to you to provide an overview of the Company's focus and activities for the Financial Year ending 30 June 2025.

The Company's aim and vision is to identify and develop resource projects in a lean and efficient manner with a view to building a resource based business that will generate long term shareholder value.

1. Work Health and Safety

There were no reported injuries to staff or contractors during the financial year ending 30 June 2025.

The identification and assessment of risk factors in our operations remains a high priority within the Company organisation and is the subject of review at every Board meeting.

2. Financial Management

The Company continued its work on advancing its portfolio projects whilst maintaining a lean and efficient approach, ensuring that it retains a sound balance sheet.

With a view to maintaining a sound level of liquidity to continue to progress the Company's projects, the Board resolved to take the following steps during the financial year:

- (a) to put on the market the two farming properties owned by the Company with a view to selling one or both the properties; and
- (b) reducing the directors' fees by 30% and the employees and consultant's fees by 20% in order to preserve liquidity, pending the sale of one or both of the farming properties.

3. Operations/Projects

The following projects were the subject of the Company's primary focus and efforts during the 2025 financial year. A more detailed review of all the Company's projects is set out in the Review of Activities section in this Annual Report.

(a) Hard Rock Silica Quartz in Queensland

The Scoping Study for the Quartz Hill deposit in northern Queensland funded by Private Energy Partners Pty Ltd, a wholly owned affiliate of Quinbrook Infrastructure Partners, was delivered during the year following the reported Mineral Resource estimate of 17.3Mt at 99.04% SiO₂ in accordance with JORC 2012 in a market announcement in December 2023. Unfortunately, Quinbrook subsequently advised that the quartz grades from Quartz Hill were not sufficient to meet their updated specification, and the agreement was terminated. Work continues to identify other Quartz within ASQ's extensive North Queensland portfolio quartz occurrences, including the 1,500m long Mount Surprise Quartz Ridge where rock chip samples have returned grade to 99.98% SiO₂.

(b) Koolyanobbing Metals Project WA

Another key focus for the Company during the reporting period was the Koolyanobbing Metals Project located 40 km northeast of Southern Cross. The Company had a number of highly encouraging gold results from soil sampling which were subject to two drilling campaigns, which has extended known mineralisation. The Company is now seeking a joint venture partner to assist with funding further exploration.

(c) Other Silica Projects

The Company continues to seek buyers for the bulk silica sand product at White Hill near Albany before it undertakes further work on the scoping study and on completing its assessment of the best access route to the main highway for that bulk resource.

Research and test work programs continue to be undertaken on samples collected from the Company's existing tenement package for investigating innovative processing techniques that could yield high purity products from the Company's high grade silica sand and hard rock quartz material.

Acknowledgments

On behalf of the Board, I thank our staff and the CEO, Sam Middlemas, for their ongoing work and efficiency in pursuing the Company's various operational activities.

I thank my fellow board members for their dedication, hard work, counsel and support during the year.

Finally, on behalf of the Board, I thank our shareholders, for your continued support of the Company.

Yours faithfully



Robert Nash
Chairman

Review of Activities

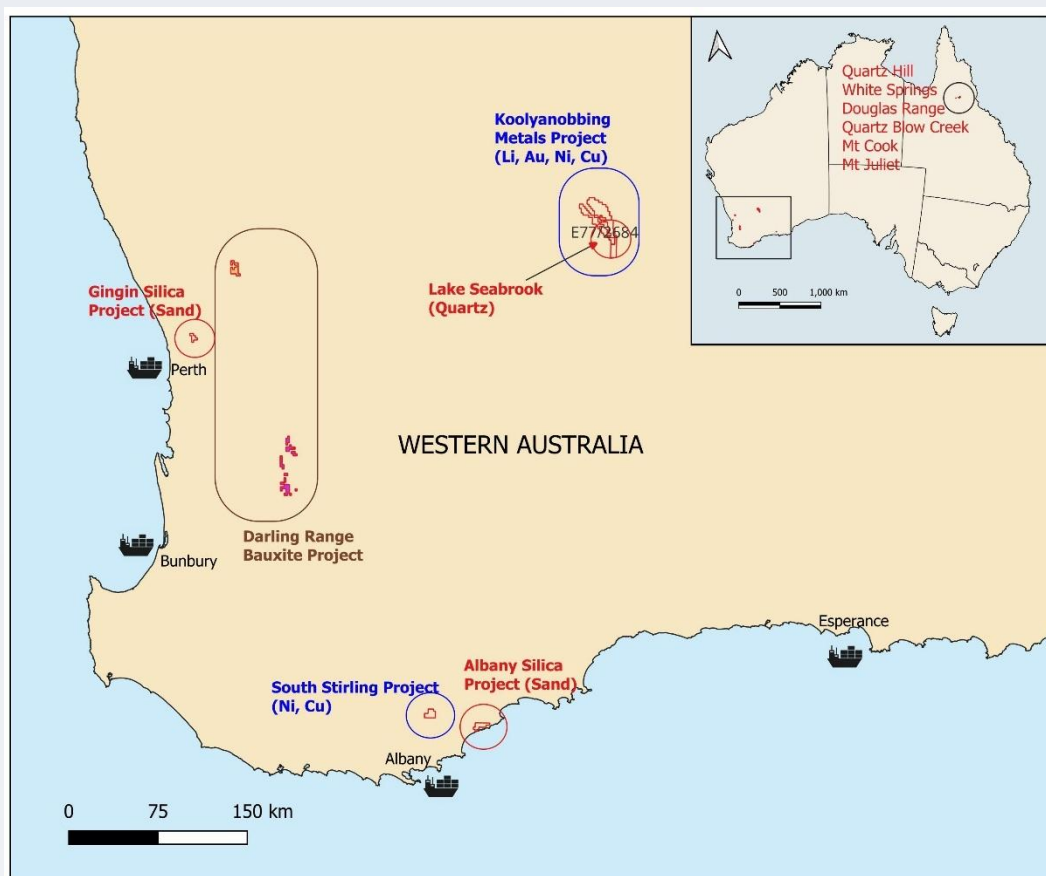


Figure 1: ASQ Project Locations

GOLD & BASE METALS EXPLORATION

Koolyanobbing Metals Project

The Koolyanobbing Metals Project (KMP) comprises lease areas of 408km² granted tenure and 91km² in application located 40km north east of Southern Cross and surrounds the Koolyanobbing Iron Ore Mine (Mineral Resources Limited, ASX:MIN).

The KMP covers 54% of the Koolyanobbing Greenstone Belt and 38km in strike of the crustal scale Koolyanobbing Shear Zone that runs along the western edge of the greenstone package.

ASQ was initially attracted to the area for the high purity quartz potential on E77/2684. This remains a focus for the company at the Lake Seabrook Quartz Project targeting a high-grade feedstock for a processing technology the Company is researching and developing.

ASQ considers the KMP underexplored and prospective for gold, high purity silica in hardrock quartz, copper, nickel, lead, zinc, and lithium. Preliminary target generation has been completed, identifying numerous gold and base metals targets for follow-up.

Gold Targets

Golden Wishbone

Soil sampling from 2022 to 2024 highlighted the +7km Golden Wishbone Gold Trend, an area of strong gold anomalism that includes the historic small scale gold mining recorded at the Golden Wishbone Shaft in the late 1930's with 204 ounces produced at an average grade of 18g/t and no modern exploration recorded.

During the reporting period 16 reverse circulation (RC) holes for 1,479m were drilled at the Golden Wishbone, Golden Wishbone SE, Emu and Island Gossan targets with follow-up Aircore (AC) and RC drilling at Golden Wishbone totalling 29 AC drill holes completed for 1,814m and 2 Reverse Circulation RC holes for 174m extending drilling along strike and down dip from the known mineralization zone.

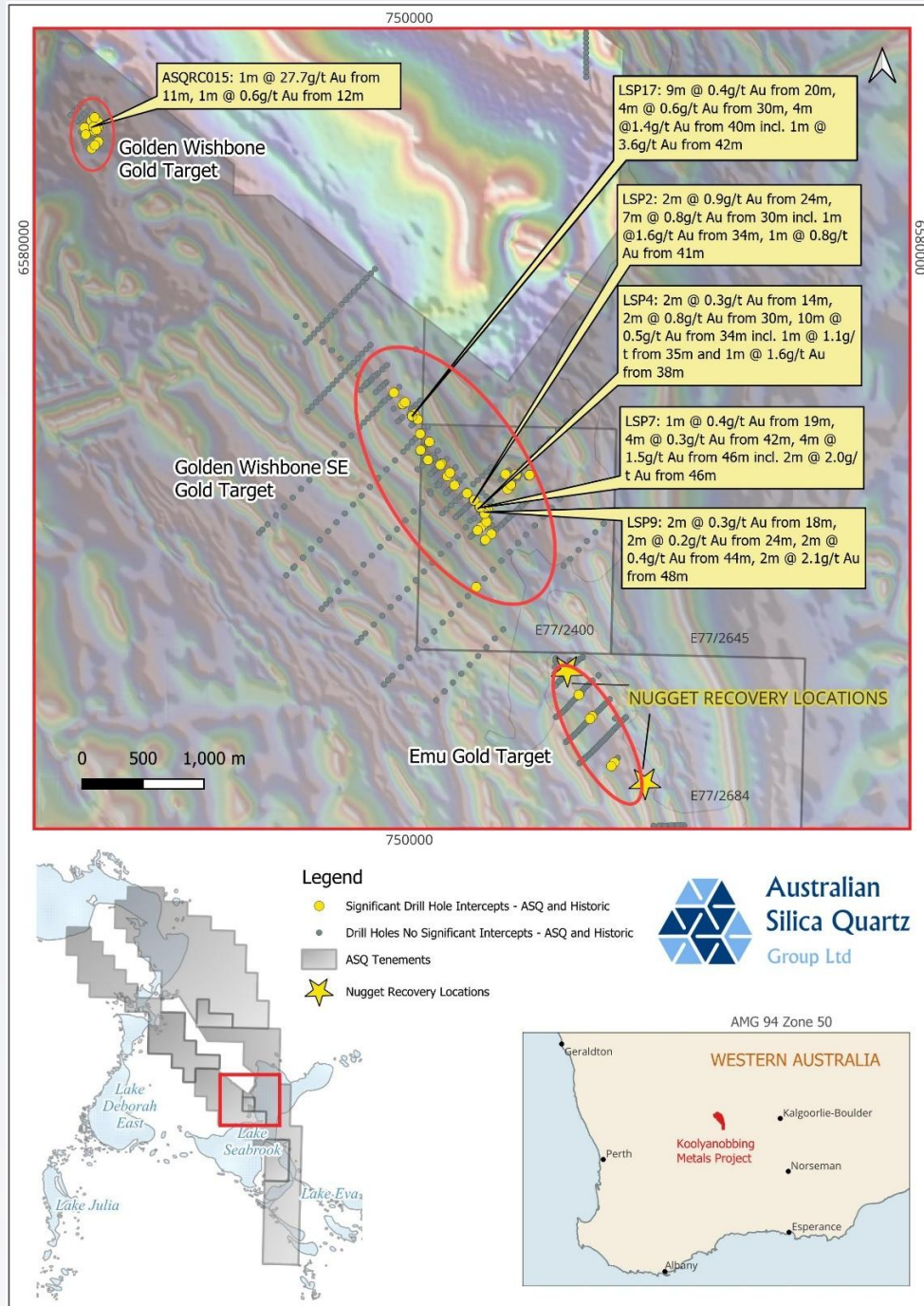


Figure 2: KMP Tenements with ASQ gold anomaly area and selected ASQ and Historic intercepts plus the gold nugget recovery locations

ASQ Golden Wishbone results to date include:

- ASQRC015: 2m at 14.2 g/t gold from 11m including 1m at 27.7g/t gold from 11m
- ASQRC013: 4m at 1.2g/t Au from 24m
- ASQAC021: 1m at 4.4g/t Au from 55m
- ASQAC015: 5m at 0.5g/t Au from 76m
- ASQAC005: 1m at 0.3g/t Au from 57m, 1m at 2.7g/t Au from 58m, 1m at 0.4g/t Au from 72m

These results extend the mineralised zone at Golden Wishbone to an area with dimensions of 260m north-south by 130m east-west that remains completely open to the southeast (along strike) and to the northeast (down dip).

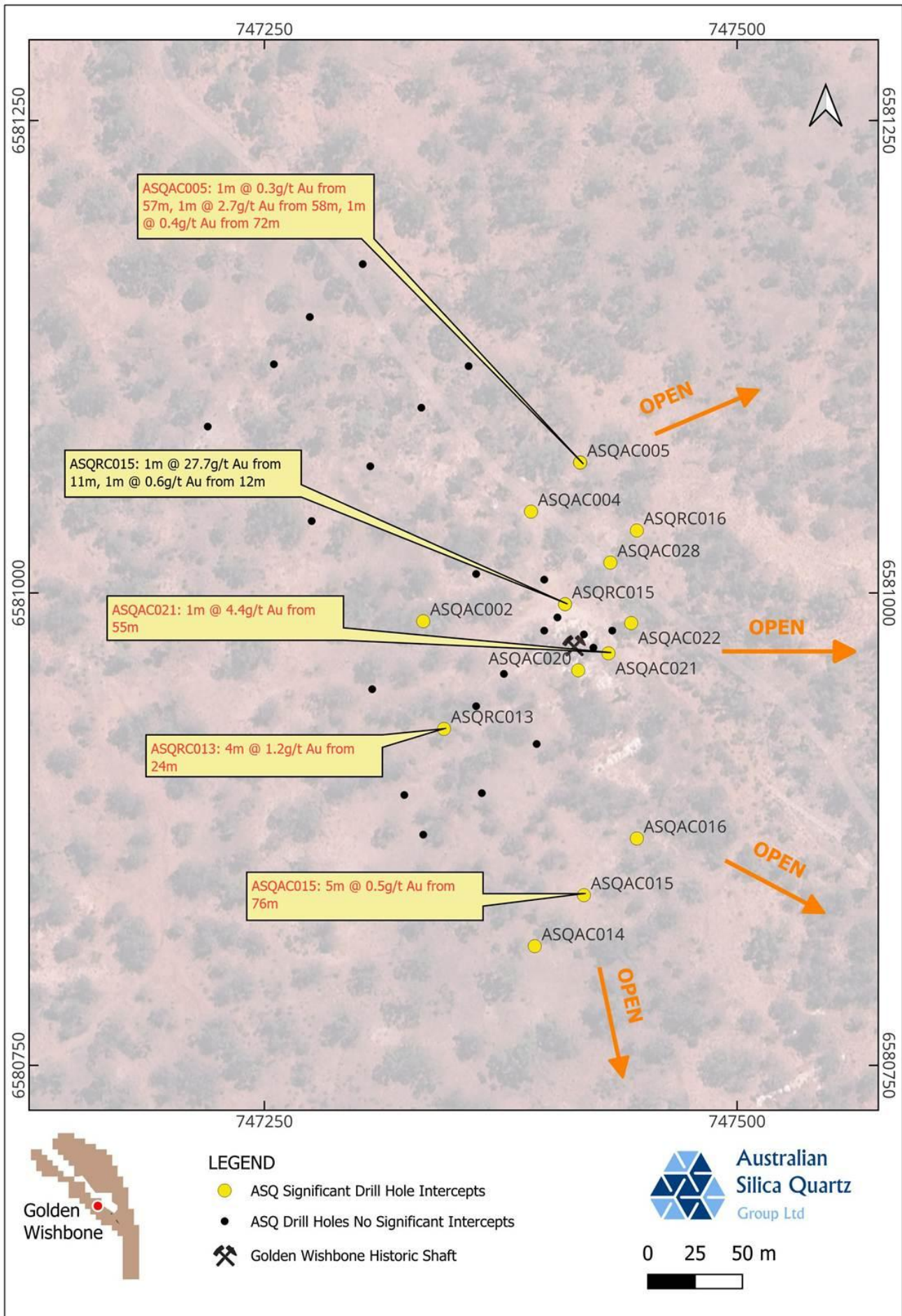


Figure 3: ASQ Drilling Results at Golden Wishbone Target

Golden Wishbone SE

Historic exploration at Golden Wishbone SE has been compiled and the results are encouraging of further exploration.

Generally, the historic drilling was all shallow with the average hole depth being 24m. The deepest historic hole at Golden Wishbone SE is 71m. Multiple historic holes end in mineralisation.

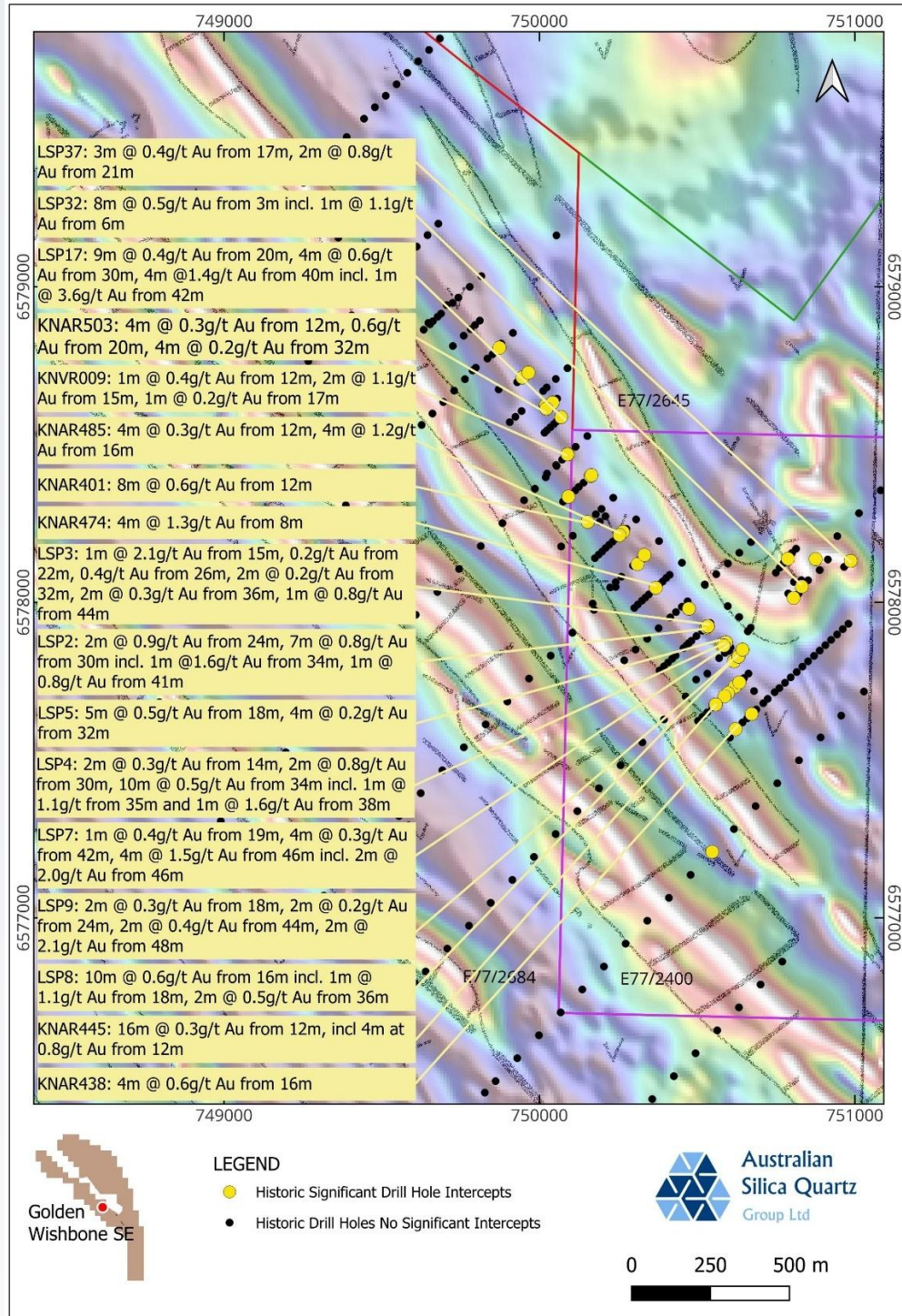


Figure 4: Historic Drilling Results at the Golden Wishbone SE Target (significant intercepts $\geq 1\text{m}@0.2\text{g/t}$, background: RTP total magnetic intensity tilt to southwest overlaid with geological interpretation sketch)

In total significant intersections were recorded in 39 drill holes at Golden Wishbone SE with a selection of intersections as follows:

- LSP17: 9m at 0.4g/t Au from 20m, 4m at 0.6g/t Au from 30m, 4m at 1.4g/t Au from 40m incl. 1m at 3.6g/t Au from 42m
- LSP9: 2m at 0.3g/t Au from 18m, 2m at 0.2g/t Au from 24m, 2m at 0.4g/t Au from 44m, 2m at 2.1g/t Au from 48m

- LSP4: 2m at 0.3g/t Au from 14m, 2m at 0.8g/t Au from 30m, 10m at 0.5g/t Au from 34m incl. 1m at 1.1g/t from 35m and 1m at 1.6g/t Au from 38m
- LSP2: 2m at 0.9g/t Au from 24m, 7m at 0.8g/t Au from 30m incl. 1m at 1.6g/t Au from 34m, 1m at 0.8g/t Au from 41m
- LSP7: 1m at 0.4g/t Au from 19m, 4m at 0.3g/t Au from 42m, 4m at 1.5g/t Au from 46m incl. 2m at 2.0g/t Au from 46m
- KNAR438: 4m at 0.6g/t Au from 16m LSP8: 10m at 0.6g/t Au from 16m incl. 1m at 1.1g/t Au from 18m, 2m at 0.5g/t Au from 36m
- KNAR503: 4m at 0.3g/t Au from 12m, 0.6g/t Au from 20m, 4m at 0.2g/t Au from 32m
- LSP3: 1m at 2.1g/t Au from 15m, 0.2g/t Au from 22m, 0.4g/t Au from 26m, 2m at 0.2g/t Au from 32m, 2m at 0.3g/t Au from 36m, 1m at 0.8g/t Au from 44m
- KNAR485: 4m at 0.3g/t Au from 12m, 4m at 1.2g/t Au from 16m
- KNAR474: 4m at 1.3g/t Au from 8m
- KNAR445: 16m at 0.3g/t Au from 12m, incl 4m at 0.8g/t Au from 12m
- KNAR401: 8m at 0.6g/t Au from 12m
- LSP32: 8m at 0.5g/t Au from 3m incl. 1m at 1.1g/t Au from 6m
- LSP5: 5m at 0.5g/t Au from 18m, 4m at 0.2g/t Au from 32m
- KNVR009: 1m at 0.4g/t Au from 12m, 2m at 1.1g/t Au from 15m, 1m at 0.2g/t Au from 17m
- LSP37: 3m at 0.4g/t Au from 17m, 2m at 0.8g/t Au from 21m

All historic results determined by 50g fire assay which is expected to under call grades in a system where coarse gold is prevalent. Whilst ASQ has not confirmed the presence of coarse gold at Golden Wishbone SE it should be noted that coarse gold is prevalent along strike to the north at Golden Wishbone and to the south at the EMU target.

The compilation and interpretation of the airborne magnetics dataset has been completed. A demagnetised unit interpreted as a mafic metavolcanic/amphibolite unit can be traced sandwiched between highly magnetic BIF's from Golden Wishbone in the north extending down through the main mineralised zone at Golden Wishbone SE and further south to the mineralised drill holes and recovered nuggets at the EMU target carrying on under lake Seabrook to connect with a zone of anomalous gold in soils on the peninsula within E77/2675 over a total length of 13km. This lithological unit has had little to no drill testing outside of the main three target areas (Golden Wishbone, Golden Wishbone SE and EMU). Around 70% of the unit's strike length is untested with drilling.

Recovery of Gold Nuggets by Metal Detecting – EMU Target

ASQ collaborated with a private prospector undertaking metal detecting activities at the EMU gold target resulting in the recovery of gold nuggets weighing 20.8 grams in total. The nuggets were found at depths from surface to around 0.2m and from two areas each around 20m by 5m.

With fresh metasedimentary and intrusive rocks sub-cropping throughout the patches the nuggets were recovered from these areas can be considered high priority drill targets.



Gold nuggets weighing 20.8g recovered from the EMU Gold Target

Joint Venture Partner Sought

ASQ is actively seeking a partner to assist with the ongoing exploration of the KGB gold prospects. Opportunities considered include parties contributing project funding, operating joint venture partners or outright purchase. Interested parties are invited to contact the Company.

SILICA/QUARTZ

The Company is focussed on discovering and developing high grade silica (99.5-99.9% SiO₂) and high purity silica (>99.95% SiO₂) projects in Western Australia and Far North Queensland. These products currently have a wide range of uses and applications. All indications suggest the high grade and high purity silica market is currently growing strongly due to greater demand from the PV Solar industry along with the range of speciality glass applications and electronics.

The Company continues to progress a range of silica sand and hardrock quartz projects held 100% by ASQ's subsidiary Australian Silica Quartz Pty Ltd. These projects consist of 8 granted exploration licences and 1 application covering approximately 469 km² within Western Australia and Queensland.

Hardrock Silica Quartz – Western Australia (Lake Seabrook) and Queensland (Mount Eliza, Douglas Range, Pandanus Creek, Quartz Blow Creek, Mount Cook and Mount Juliet)

The Company has one granted exploration licence in the Yilgarn region of Western Australia and six granted exploration permits along with three application permits in Far North Queensland covering quartz deposits with the potential to contain high purity silica and/or high-grade silica.

Quartz Hill Metallurgical Grade Silicon (MGSi) Project

The Quartz Hill MGSi Project, located 300km northwest of Townsville in Far North Queensland, contains the 17.3Mt MGSi quartz at 99.04% SiO₂ JORC 2012 resource (refer Table 1).

ASQ has been exploring the Quartz Hill MGSi Project under a Project Development Heads of Agreement ('HoA') with Private Energy Partners Pty Ltd, a wholly owned affiliate of Quinbrook Infrastructure Partners (Quinbrook').

In March 2025 ASQ furnished Quinbrook with an initial draft of the Scoping Study for discussion and feedback. It was identified that due to the iron and aluminium concentrations within the quartz, the expected product from Quartz Hill would not meet the updated Quinbrook specification which had been advised subsequent to the signing of the HoA. After a period of discussion and consideration of alternative approaches, ASQ delivered the final Quartz Hill MGSi Quartz Project Scoping Study to Quinbrook in May 2025.

After consideration of the Scoping Study, Quinbrook advised the quartz grades from Quartz Hill are not suitable to meet 100% of the feedstock requirements of their proposed polysilicon manufacturing facility but may be suitable to blend with quartz from another source. Development of the Quartz Hill MGSi Project is now on hold as Quinbrook have elected not to proceed with funding the Feasibility Study and the HoA with Quinbrook was duly terminated in June, 2025.

Quinbrook are open to future engagement in relation to other sources of MGSi quartz within ASQ's extensive portfolio of North Queensland quartz occurrences. ASQ regard several large quartz bodies within its Queensland tenure as high priority MGSi quartz targets including the 1,500m long Mount Surprise Quartz Ridge where ASQ rock chip samples have returned grades to 99.98% SiO₂.

Exploration programs assessing these high priority MGSi Quartz targets are underway.

Table 1: 2023 Quartz Hill Mineral Resource Estimate

Quartz Hill MGSi Deposit

December 2023 Mineral Resource Estimate (98% SiO₂ Cut-off)

Class	Total Mineral Resource								
	Tonnage	SiO ₂	Al ₂ O ₃	CaO	Fe ₂ O ₃	MgO	Na ₂ O	TiO ₂	ΣOxides
	Mt	%	%	%	%	%	%	%	%
Indicated	7.6	99.09	0.67	0.005	0.16	0.008	0.02	0.03	0.91
Inferred	9.7	99.00	0.73	0.009	0.17	0.012	0.03	0.03	1.00
Total	17.3	99.04	0.70	0.007	0.17	0.010	0.03	0.03	0.96

Note:

All Mineral Resources figures reported in the table above represent estimates at December 2023. Mineral Resource estimates are not precise calculations, being dependent on the interpretation of limited information on the location, shape and continuity of the occurrence and on the available sampling results. The totals contained in the above table have been rounded to reflect the relative uncertainty of the estimate. Rounding may cause some computational discrepancies.

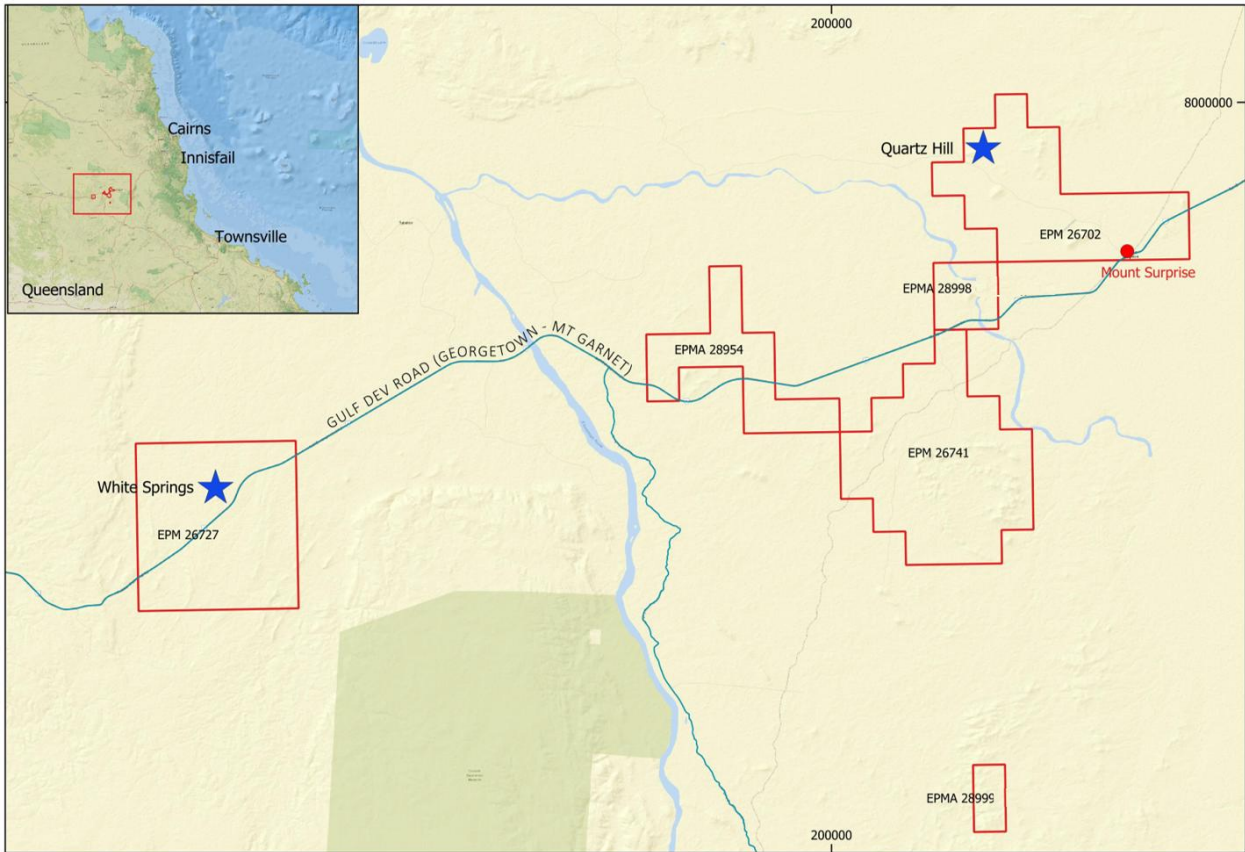


Figure 5: ASQ Queensland Hardrock Quartz Projects – Location Map



Diamond Drill Core – Quartz Hill MGSi Deposit

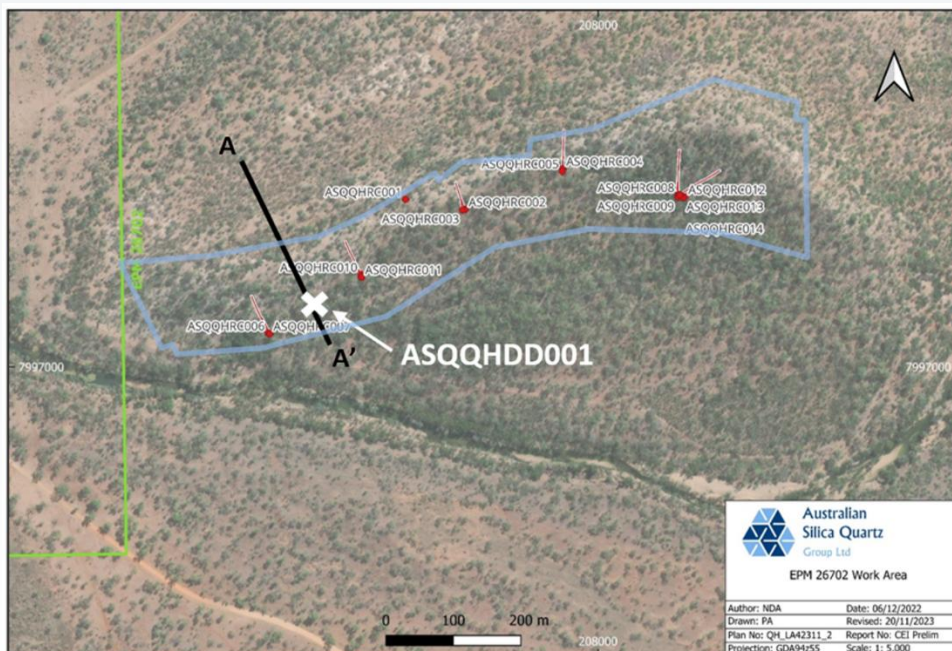


Figure 6: Quartz Hill ASQ Drilling and Resource Outline (pale blue)

High Purity Quartz Research and Development

Rock chip samples taken by the Company across its High Purity Quartz (HPQ) focused leases have returned silica assays to 99.99% SiO₂ after acid washing demonstrating potential for high purity silica products.

ASQ is currently working with research laboratories specialising in high purity quartz. Detailed metallurgical trials underway using the ASQ flowsheet developed as a part of the Company's ongoing Research and Development Program. The work being completed includes advanced processing techniques not previously employed by the Company such as hot chlorination. The aim of this work is to demonstrate the suitability of quartz sampled from ASQ tenements is suitable for Crucible Grade High Purity Quartz production.

SILICA SAND PROJECTS – GINGIN & ALBANY

The Gingin Silica Sand Project consists of one application exploration licence located 20km north of Perth, the Albany Silica Sand Project consists of one granted exploration licence 80 km east of the Port of Albany.

Albany White Hill Silica Sand Project

The Company has completed a Mineral Resource Estimate on a property 70km east of Albany totalling 11.6 Mt with >99.9% SiO₂ and <50 ppm Fe₂O₃ and extends over a strike length of 1,650m and has a maximum width of 1,565m.

Metallurgical testwork results indicate the silica sand is readily processed by conventional washing and gravity separation to produce a very high-grade silica sand product that has potential for industries such as general and specialty glass making including solar panel cover glass and optical glass.

A Scoping Study looking at the suitability of the deposit for development into a 0.5 – 1.0 Mtpa export operation is progressing, however priority is being given to identifying an offtake partner over the development. Preliminary assessment of metallurgy and process plant design, environmental assessment, water supply, the sand market and port access has given the Company confidence that these aspects of the project are achievable within the expected economic and regulatory constraints. Work is also progressing on reducing the levels of TiO₂ in the resource.

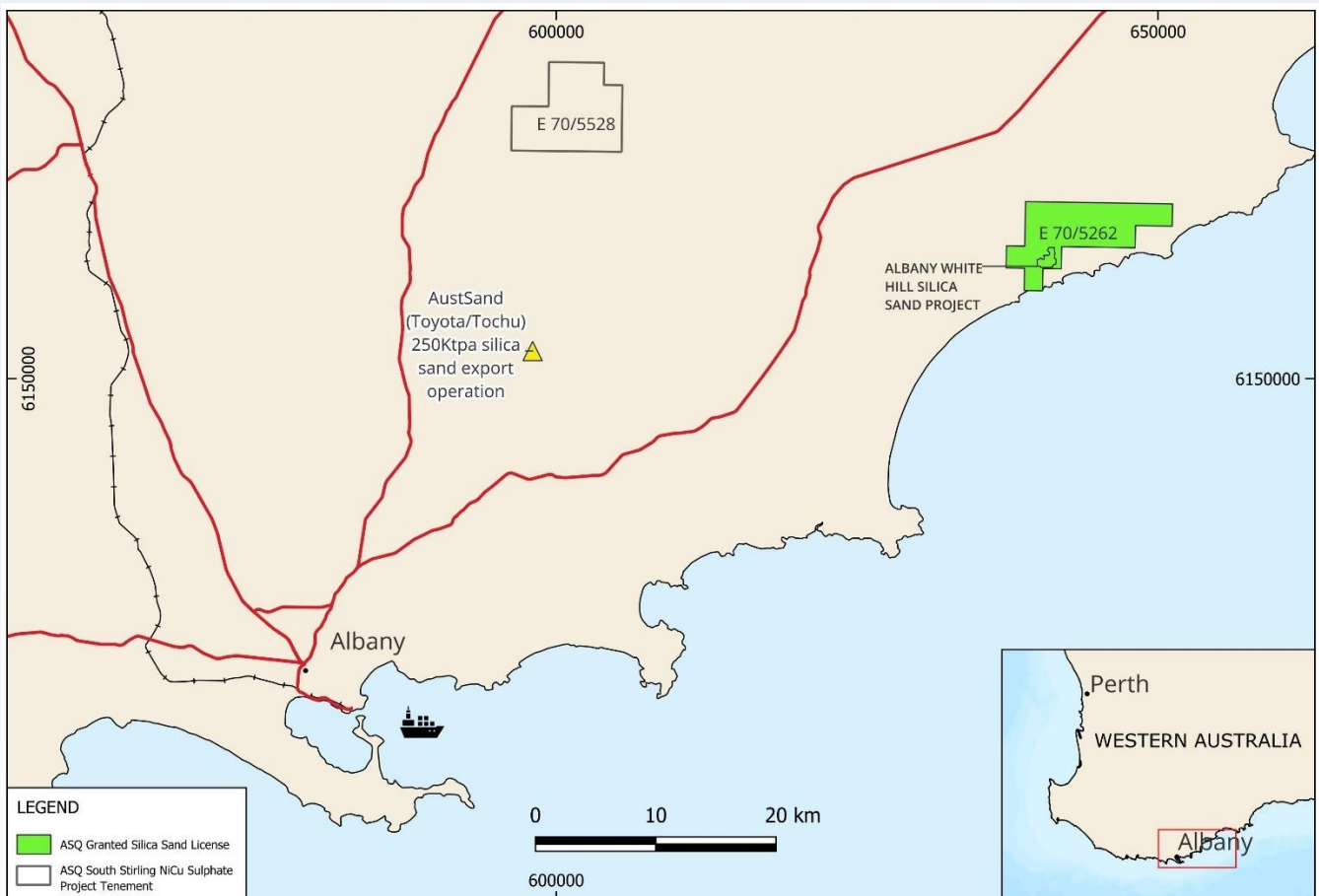


Figure 7: Location of the Albany White Hill Silica Sand Project on E70/5262 east of Albany. ASQ South Stirling Ni-Cu Sulphide tenement shown for context. Other holder tenements not shown.

Table 2: Albany White Sand Hill Silica Sand Deposit January 2021 Inferred Mineral Resource Estimate

Size Fract	Tonnes	Yield	Fe ₂ O ₃	Al ₂ O ₃	TiO ₂	CaO	K ₂ O	Na ₂ O	MgO	ΣOx.	SiO ₂ +LOI
	Mt	(%)	ppm	ppm	ppm	ppm	ppm	ppm	ppm	%	%
Fine	8.2	70.6	46	145	410	12	16	19	10	0.07	99.93
Coarse	3.4	29.1	43	137	668	6	12	19	3	0.09	99.91

SOUTH STIRLING NICKEL COPPER PROJECT – ALBANY FRASER BELT, WESTERN AUSTRALIA

The Company considers the South Stirling project area has the potential for Nickel-Copper magmatic sulphide mineralisation associated with mafic-ultramafic intrusions emplaced into granulite facies country rocks.

In 2022 ASQ twinned an anomalous historic drillhole completed by Iluka Resources Limited (“Iluka”) by way of a single vertical aircore hole SS001. The Iluka hole (W00324) returned an end of hole assay of 1.5m at 0.79% Ni, 934 ppm Cu from 28.5m. Iluka recorded the rock type as saprolite suggesting fresh basement rocks had not been reached. ASQ’s SS001 was terminated at 52m due to difficult drilling conditions prior to intersecting fresh basement rock.

The encouraging assay results from SS001 include intersections; 12m from 26m @ 0.70% Ni and 0.06% Cu, within 21m from 21m @ 0.59% Ni and 0.05% Cu with maximum recorded values of 9,237ppm (0.92%) Ni from 28-30m and 1,007ppm Cu from 38-42m consistent with the previously reported Iluka result.

ASQ’s drilling was limited to the road reserve due to land access restrictions where it was possible to twin the anomalous Iluka hole. ASQ will continue efforts to establish neighbouring land access in order to further assess this anomaly.

BAUXITE EXPLORATION ACTIVITIES UNDERTAKEN UNDER THE JOINT VENTURE WITH HD MINING

In 2010 the Company entered into a JV with HD Mining & Investment Pty Ltd (HD Mining) a wholly-owned subsidiary of the Shandong Bureau No1 Institute for Prospecting of Geology & Minerals (Shandong) to explore for bauxite. The JV provides for HD Mining to fund 100% of exploration and feasibility costs for HD Mining to earn:

- a 40% interest in any defined area of exploration on the making a binding commitment by HD Mining to undertake a detailed feasibility study for the commercial mining of the defined area; and
- a further 20% interest in a defined area upon completion of the feasibility study and the making by the JV committee of a decision to commence mining.

The current JV bauxite resource inventory stands at 78.4Mt of Inferred Mineral Resource as at 30 June 2025 (refer to Mineral Resources Table 3 for resources details). ASQ believes the current resources have potential for growth and provide opportunities for future domestic and export exploitation.

Key resources, located in the eastern and northern Darling Range, display low reactive silica and high available alumina to reactive silica ratios, making them attractive for refining. The majority of alumina present is the trihydrate mineral gibbsite, which enables cost effective, low temperature extraction.

ASQ bauxite resources are predominantly located on large private land holdings (typically cleared farmland), in proximity to road and rail infrastructure. Bauxite is shallow, typically with less than 2m of loose overburden, requiring limited pre-stripping, attributes that indicate potential to support long life, low cost bauxite operations.

ASQ and HD Mining continue to evaluate the potential for economic development of the Dionysus and the combined Ceres/Athena resource areas (Athena: 36.2Mt, 32.8% available alumina, 2.8% reactive silica, Dionysus: 20.3Mt, 32.6% available alumina, 3.4% reactive silica, Ceres 21.9Mt, 31.4% available alumina, 3.2% reactive silica).

Bauxite Royalty

Following the sale of the Bauxite Resources Joint Venture Bauxite Project to Yankuang Group a royalty on future bauxite sales from the project of 0.9% of FOB price payable to ASQ was negotiated. The Yankuang Group bauxite project contains in excess of 300 million tonnes in the world class bauxite region in the Darling Range, Western Australia. ASQ is entitled to a royalty of 0.9% of the FOB price on the first 100 million tonnes mined (under current prices of Bauxite this royalty would equate to approx. A\$0.50/tonne).

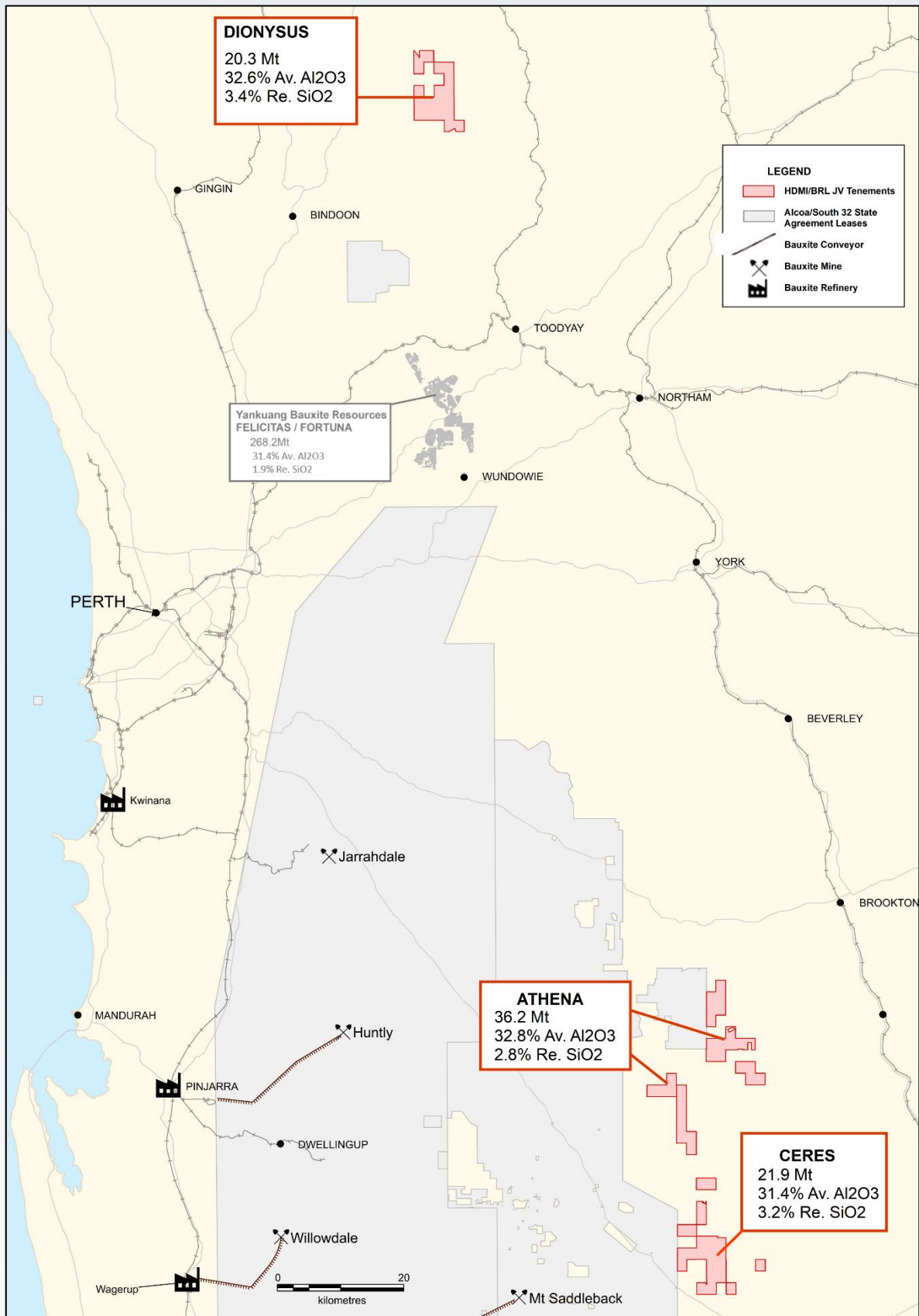


Figure 8: ASQG Darling Range tenement holding and bauxite resource locations

Mineral Resources and Ore Reserves

The Company has completed an update to its Mineral Resources and Ore Reserves Statement for the twelve months ending June 30, 2025. The Company's total Bauxite Mineral Resources are estimated at 78.4Mt at an average available alumina grade of 32.4%, Metallurgical Grade Silica Quartz Resources of 17.3Mt at 99.04% SiO₂ and the Silica Sand Resources total 10.7Mt at an average SiO₂ + LOI grade of 99.92%. The Mineral Resource Statement as at 30 June, 2025 is provided in table 3.

JORC Code 2012 and ASX Listing Rules Requirements

This annual statement has been prepared in accordance with the 2012 Edition of the 'Australian Code for Reporting of Exploration Results, Mineral Resources and Ore Reserves' (JORC Code 2012).

There have been no material changes to material projects for the purposes of ASX Listing Rules 5.8 and 5.9 and as such Material Information Summaries or JORC Code 2012 Assessment and Reporting Criteria are not provided with this statement.

The Company advises that this material contains summaries of Exploration Results and Mineral Resources as defined in the JORC Code 2012. JORC compliant Public Reports released to the ASX declaring the exploration results or JORC resources referred to can be viewed on both the ASX and the Company websites, free of charge.

Governance

The annual audit of resources and reserves is carried out internally by the Company. The Company ensures that the Mineral Resources and Ore Reserves reviews are subject to appropriate internal controls, and in line with the Company's Mineral Resources and Ore Reserves Policy. The estimation procedures are well established and prepared by competent and qualified professionals. All resources are based on well-founded assumptions, and compliant with Joint Ore Reserves Committee (JORC) guidelines.

Competent Persons Statement

The information in this report that relates to Exploration Targets, Exploration Results, Mineral Resources or Ore Reserves is based on information compiled by Nick Algie, a Competent Person who is a Member of The Australasian Institute of Mining and Metallurgy. Mr Algie is a full-time employee of the Company. Mr Algie has sufficient experience that is relevant to the styles of mineralisation and types of deposit under consideration and to the activities being undertaken to qualify as a Competent Person as defined in the 2012 Edition of the 'Australasian Code for Reporting of Exploration Results, Mineral Resources and Ore Reserves'. Mr Algie consents to the inclusion in the report of the matters based on his information in the form and context in which it appears.

Forward Looking Statements

This report may include forward looking statements. Often, but not always, forward looking statements can generally be identified by the use of forward looking words such as "may", "will", "expect", "intend", "plan", "estimate", "anticipate", "continue", or other similar words and may include, without limitation, statements regarding plans, strategies, and objectives of management. Forward looking statements inherently involve known and unknown risks, uncertainties and other factors that may cause the company's actual results, performance and achievements to differ materially from anticipated results, performance or achievements. Forward looking statements are based on the Company and its management's good faith assumptions relating to the financial, market, regulatory and other relevant environments that will exist and affect the company's business and operations in the future. The Company does not give any assurance that the assumptions on which forward looking statements are based will prove to be correct, or that the Company's business or operations will not be affected in any material manner by these or other factors not foreseen or foreseeable by the Company or management or beyond the Company's control. Accordingly, readers are cautioned not to place undue reliance on forward looking statements.

Table 3: Mineral Resource Statement as at 30 June 2025

BAUXITE		Resources as at June 30 2024					Resources as at June 30 2025				
Deposit	Resource Category	Size Mt	Al ₂ O ₃	Al ₂ O ₃	SiO ₂	SiO ₂	Size Mt	Al ₂ O ₃	Al ₂ O ₃	SiO ₂	SiO ₂
			(total)	(available)	(total)	(reactive)		(total)	(available)	(total)	(reactive)
			%	%	%	%		%	%	%	%
Athena	Inferred	36.2	41.8	32.8	18.1	2.8	36.2	41.8	32.8	18.1	2.8
Dionysus	Inferred	20.3	42.1	32.6	12.0	3.4	20.3	42.1	32.6	12.0	3.4
Ceres	Inferred	21.9	41.2	31.4	20.4	3.2	21.9	41.2	31.4	20.4	3.2
HDM sub-total		78.4	41.7	32.4	17.2	3.1	78.4	41.7	32.4	17.2	3.1
Total	Measured										
	Indicated										
	Inferred	78.4	41.7	32.4	17.2	3.1	78.4	41.7	32.4	17.2	3.1
Total Bauxite Resources		78.4	41.7	32.4	17.2	3.1	78.4	41.7	32.4	17.2	3.1

SILICA SANDS		Resources as at June 30 2025								
Deposit	Resource Category	Size Mt	SiO ₂ (+LOI)	Al ₂ O ₃	Fe ₂ O ₃	CaO	MgO	K ₂ O	TiO ₂	LOI
			%	%	%	%	%	%	%	%
Albany White Hill	Inferred	10.7	99.92	0.01	0.02	0.003	0.002	0.003	0.05	0.07
Total Silica Sand Resources		10.7	99.92	0.01	0.02	0.003	0.002	0.003	0.05	0.07

MGSI QUARTZ		Resources as at June 30 2025								
Deposit	Resource Category	Size Mt	SiO ₂	Al ₂ O ₃	Fe ₂ O ₃	CaO	MgO	Na ₂ O	TiO ₂	ΣOxides
			%	%	%	%	%	%	%	%
Quartz Hill	Indicated	7.6	99.09	0.67	0.16	0.005	0.008	0.02	0.03	0.91
	Inferred	9.7	99.00	0.73	0.17	0.009	0.012	0.03	0.03	1.00
Total MGSI Quartz Resources		17.3	99.04	0.70	0.17	0.003	0.010	0.03	0.03	0.96

The Company complies with Listing Rule 5.21.5 by utilising a combination of internal and external verification processes for its Mineral Resource Estimates. Any activities that result in material impacts on Resource estimates are required to be reported to the Board who will make appropriate announcements consistent with other announcements requiring Board approval. The Company provides transparent reporting with quality control in sampling, drilling techniques and employs strict quality control procedures during sample collection and analysis, including blanks, standards and duplications.

Mineral Resource Statement - Competent Person Statement

The Mineral Resource Statement was prepared by Mr Nick Algie, a Competent Person who is a Member of The Australasian Institute of Mining and Metallurgy. Mr Algie is a full-time employee of the Company. Mr Algie has sufficient experience that is relevant to the styles of mineralisation and types of deposit under consideration and to the activities being undertaken to qualify as a Competent Person as defined in the 2012 Edition of the 'Australasian Code for Reporting of Exploration Results, Mineral Resources and Ore Reserves'. In addition, the Company's management carries out regular reviews and audits of internal processes. Mr. Algie consents to the inclusion in the report of the matters based on his information in the form and context in which it appears. The Company confirms the following:

- The Mineral Resource statement above is based on and fairly represents information and supporting documentation prepared by Mr Algie;
- The Mineral Resource statement as a whole has been approved by Mr Algie; and
- Mr Algie has provided prior written consent to the issue of the Mineral Resource statement in the form and context in which it appears in this Annual Report.

Annual Financial Report

For the year ended 30 June 2025

Contents

DIRECTORS’ REPORT 17

AUDITOR’S INDEPENDENCE DECLARATION 28

STATEMENT OF PROFIT OR LOSS AND OTHER COMPREHENSIVE INCOME 29

STATEMENT OF FINANCIAL POSITION 30

STATEMENT OF CHANGES IN EQUITY 31

STATEMENT OF CASH FLOW 32

NOTES TO THE FINANCIAL STATEMENTS 33

DIRECTORS’ DECLARATION..... 54

INDEPENDENT AUDIT REPORT 55

ASX ADDITIONAL INFORMATION 59

Directors' Report

Your directors submit their report on the consolidated entity (referred to hereafter as the Group) consisting of Australian Silica Quartz Group Ltd and the entities it controlled at the end of, or during, the year ended 30 June 2025.

DIRECTORS

The names and details of the Company's directors in office during the financial year and until the date of this report are as follows. Where applicable, all current and former directorships held in listed public companies over the last three years have been detailed below. Directors were in office for this entire period unless otherwise stated.

NAMES, QUALIFICATIONS, EXPERIENCE AND SPECIAL RESPONSIBILITIES

Robert Nash, B Juris LLB, Public Notary (Non-Executive Chairman)

Mr Nash is a lawyer by profession and practises as a barrister. He is currently the Chairperson of the WA Racing Penalties Appeals Tribunal. Previous positions he has held include being the Head of WA Navy Legal Panel, Council Member of the Law Society of Western Australia, Convenor of the Law Society Education Committee and member of the Law Society Ethics and Professional Conduct Committee.

Mr Nash joined the board before the Company listed in 2007. He was appointed Chairman in August 2013.

Mr Nash has not held any other listed company directorships in the last 3 years.

Luke Atkins, LLB (Non-Executive Director)

Mr Atkins previously practised as a lawyer and was the principal of Atkins and Co Lawyers, a Perth based legal firm which he owned and managed for seven years. Mr Atkins brings to the Company extensive experience in capital raising and public listed companies.

Mr Atkins was formerly Chairman of ASX listed Altech Batteries Limited (8 May 2007 to 30 June 2025) and has interests in a number of enterprises including agriculture and property development. He has held no other listed company directorships in the last 3 years.

Mr Atkins is a founding Director of the Company.

Neil Lithgow, MSC, MAusIMM (Non-Executive Director)

Mr Lithgow is a geologist by profession with over 36 years experience in mineral exploration, economics and mining feasibility studies covering base metals, coal, iron ore and gold.

Mr Lithgow was formerly a non-executive director of Aspire Mining Limited (12 February 2010 to 29 November 2022) and he is a member of the Australian Institute of Mining and Metallurgy.

Mr Lithgow has not held any other listed company directorships in the last 3 years.

Mr Lithgow is a founding Director of the Company.

Pengfei Zhao, B.Sc, GC Min.Econ. (Non-Executive Director) Appointed 9 October 2020

Mr Pengfei Zhao B.SC. Grad Cert Mineral Economic, is a director of HD Mining and Investments Pty Ltd, a wholly owned subsidiary of Shandong Bureau No 1 Institute for Prospecting of Geology & Minerals. He has more than 15 year's experience in financial planning and control, mineral titles and project evaluation and has also managed several proprietary companies with interests in mineral exploration, agriculture, entertainment, international trading and investment.

Mr Zhao has not held any other listed company directorships in the last 3 years.

Directors' Report cont.

CHIEF EXECUTIVE OFFICER & COMPANY SECRETARY

Sam Middlemas, B.Com., PGrad DipBus., CA (Chief Executive Officer and Company Secretary)

Sam Middlemas is a Chartered Accountant with over 30 years of commercial experience in the mining and resources sector. Sam was formerly a Non-Executive Director of the ASX Listed Elemental Minerals Limited, including Non-Executive Chairman for 3 years, and formally a Non-Executive Director of the ASX listed Rubicon Resources Limited. He has previously worked or consulted for a number of ASX, TSX and AIM listed Companies, acting in roles including Chief Executive Officer, Non-Executive Director, Chief Financial Officer and Company Secretary to a number of listed public companies over the last 25 years.

He was appointed Company Secretary for Australian Silica Quartz Group Ltd on 6 July 2012, and Chief Executive Officer on 21 October 2015. He also acts as Company Secretary for the ASX listed Ardea Resources Limited.

Interests in the shares, options and performance rights of the Company and related bodies corporate

As at the date of this report, the interests of the directors and their related bodies corporate in the shares, options and performance rights of Australian Silica Quartz Group Ltd were:

	Performance Rights	Ordinary Shares
Robert Nash	2,000,000	1,245,714
Luke Atkins	5,333,334	26,924,063
Neil Lithgow	2,000,000	22,385,148
Pengfei Zhao	2,000,000	1,000,000

OPERATING AND FINANCIAL REVIEW

OPERATING REVIEW

The Company's main activities during the year continued to be focussed on the Silica projects in Queensland and WA. Preliminary exploration work continues on all tenements

Work continued on the Koolyanobbing Metals Project with a number of targets identified and drilled following positive results from soil samples and Electromagnetic survey work. The Company is seeking a JV partner to continue to fund gold exploration activities.

Bauxite exploration continued through the Bauxite managed HD Mining Joint Venture ("HDMI") where Bauxite resources at 30 June 2025 stood at 78.4 million tonnes (see table 1 for resource details).

There were no significant changes in the nature of the Group's activities during the year.

FINANCIAL REVIEW

The Group has recorded a loss for the period after income tax for the year ended 30 June 2025 of \$1,921,584 (2024: \$830,556 loss).

Included in the operating loss was expenditure on exploration totalling \$1,107,229 compared to \$1,431,813 in the year ended 30 June 2024. The group does not capitalise exploration expenditure, but writes off the full amount of expenditure incurred each year. Employment Benefits expense was \$251,699 (2024: \$230,757).

The Group earned \$41,659 in interest revenue in the year compared to \$118,954 in 2024, that is largely reflective of the reduction in in cash balance and interest earning ability on surplus cash. The average rate earned on investments during the year was 3.10%, compared to an average rate of 4.00% in 2024. The Group's cash balances decreased by \$1,560,783 over the course of the year.

The Group ended the financial year with cash reserves of \$836,759 (2024: \$2,397,542).

The Cash Flow Statement on page 32 of this Annual Financial Report sets out details of the use of these cash funds and the Group's operating cash flows.

Directors' Report cont.

DIVIDENDS

No dividends were paid or declared during the financial year. No recommendation for payment of dividends has been made.

SHAREHOLDER RETURNS

	2025	2024
Basic earnings per share (cents)	(0.68)	(0.29)
Diluted earnings per share (cents)	(0.68)	(0.29)

LIKELY DEVELOPMENTS AND EXPECTED RESULTS

The Company's main focus continues with its work on the Silica projects. It also continues to explore for other commodities through its Koolyanobbing Metals project and within its existing tenements and through the HD Mining Joint Venture, and other Joint Ventures.

SIGNIFICANT CHANGES IN THE STATE OF AFFAIRS

There were no significant changes in the state of affairs of the Group during the financial year.

RISK MANAGEMENT

The Board is responsible for ensuring that risks, and also opportunities, are identified on a timely basis and that activities are aligned with the risks and opportunities identified by the Board.

The Company believes that it is crucial for all Board members to be a part of this process, and as such the Board has not established a separate risk management committee.

The Board has a number of mechanisms in place to ensure that management's objectives and activities are aligned with the risks identified by the Board. These include the following:

- Board approval of a strategic plan, which encompasses strategy statements designed to meet stakeholders' needs and manage business risk.
- Implementation of Board approved operating plans and budgets and Board monitoring of progress against these budgets.

SIGNIFICANT EVENTS AFTER THE BALANCE DATE

No matters or circumstance have arisen since 30 June 2025 which significantly affected or could significantly affect the operations of the consolidated group in future financial years.

ENVIRONMENTAL REGULATION AND PERFORMANCE

The Group is subject to environmental regulation in respect to its exploration activities. The Group aims to ensure the appropriate standard of environmental care is achieved, and in doing so, that it is aware of and is in compliance with all environmental legislation. The directors of the Group are not aware of any breach of environmental legislation for the year under review.

Directors' Report cont.

REMUNERATION REPORT

The remuneration report is set out under the following main headings:

- A Principles used to determine the nature and amount of remuneration
- B Service agreements
- C Details of remuneration
- D Share-based compensation
- E Equity instrument disclosures relating to key management personnel
- F Performance Right holdings
- G Loans to key management personnel
- H Other transactions with key management personnel
- I Additional information

The information provided in this remuneration report has been audited as required by section 308(3C) of the Corporations Act 2001.

A Principles used to determine the nature and amount of remuneration

Remuneration Policy

The remuneration policy of the Company has been designed to align director and executive objectives with shareholder and business objectives by providing a fixed remuneration component and offering specific long-term incentives based on key performance areas affecting the Company's financial results. The Board believes the remuneration policy to be appropriate and effective in its ability to attract and retain the best executives and directors to run and manage the Company.

The Board's policy for determining the nature and amount of remuneration for Board members and senior executives of the Company is as follows:

The remuneration policy, setting the terms and conditions for the executive directors and other senior executives, was developed by the Board. All executives receive a base salary, which is based on factors such as responsibilities and experience. The executives of the Company outside the directors are also eligible to participate in the Company's Performance Rights Plan as approved by Shareholders in November 2023. The Board reviews executive packages annually by reference to the Company's performance, executive performance and comparable information from industry sectors and other listed companies in similar industries.

The Board may exercise discretion in relation to approving incentives, bonuses and options. The policy is designed to attract and retain the highest calibre of executives and reward them for performance that results in long-term growth in shareholder wealth.

The Australian based executive directors and executives receive a superannuation guarantee contribution required by the government, which was 11.5% in 2024/2025, and do not receive any other retirement benefits. Board members were awarded Performance Rights that were approved by shareholders at the previous AGMs.

All remuneration paid to directors and executives is valued at the cost to the Company and expensed. Options or rights are valued using the Black Scholes or binomial option pricing methodology.

The Board policy is to remunerate non-executive directors at market rates for comparable companies for time, commitment and responsibilities. The Board determines payments to the non-executive directors and reviews their remuneration annually, based on market practice, duties and accountability. Independent external advice is sought when required. The maximum aggregate amount of fees that can be paid to non-executive directors is subject to approval by shareholders at the Annual General Meeting (currently \$600,000). Fees for non-executive directors were \$24,000 per annum with additional fees payable for membership of other board related committees – fees were reduced by 30% from 1 February 2025 to conserve Company funds. The fees are not linked to the performance of the Group, however, to align directors' interests with shareholder interests, the directors are encouraged to hold shares in the Company. Directors were also issued Performance Rights following approval at the 2023 Annual General Meeting.

Directors' Report cont.

Company performance, shareholder wealth and directors' and executives' remuneration

Historically, a number of performance rights have been granted to key management personnel and are linked to the company performance through market based performance conditions. There were no rights issued to employees and consultants during the financial year. Details on the proportion of remuneration is detailed in Part F of the remuneration report.

The following table shows the gross revenue, losses and earnings per share for the current and prior year.

	2025	2024
	\$	\$
Revenue	566,685	1,537,171
Net (loss)	(1,921,584)	(830,556)
Earnings per share (cents)	(0.68)	(0.29)

B Service agreements

The details of service agreements of the key management personnel of Australian Silica Quartz Group Ltd and the Group are as follows:

Contracted key management personnel are engaged on standard commercial terms.

Luke Atkins – Consultancy agreement.

- Term of agreement – Commenced 1 July 2016, subject to a 3 months' written notice period.
- Monthly retainer fee of \$30,500 for providing business and projects counsel and advice to the Company as and when requested (reduced by 20% from 1 February 2025 to save funds).

Sam Middlemas – Chief Executive Officer – Consultancy agreement.

- Term of agreement – Commenced 19 October 2015, subject to a 3 months' written notice period.
- Monthly minimum retainer fee of \$19,440 for providing Chief Executive Officer Services (reduced by 20% from 1 February 2025 to save funds)
- Company has provided an interest free loan of \$200,000 to reimburse the purchase of shares in Australian Silica Quartz Group Ltd to be repaid earlier of 10 October 2026, or sale of shares, or within 3 months of Consultancy agreement being terminated.

Contracted key management personnel are engaged on standard commercial terms.

C Details of remuneration

Details of the remuneration of the directors, the key management personnel of the Group (as defined in AASB 124 Related Party Disclosures) and specified executives of Australian Silica Quartz Group Ltd are set out in the following table.

The key management personnel of Australian Silica Quartz Group Ltd and the Group include the directors and company secretary as per page 17 & 18 above.

The Chief Executive Officer has full authority and responsibility for planning, directing and controlling the activities of the Group. The Exploration Manager has authority and responsibility for planning, directing and controlling the exploration activities of the Group. The Chief Financial Officer has responsibility for planning directing and controlling the financial affairs of the Group, as directed by the Board. Given the size and nature of operations of Australian Silica Quartz Group Ltd and the Group, there are no other employees who are required to have their remuneration disclosed in accordance with the Corporations Act 2001.

Directors' Report cont.

Key management personnel and other executives of Australian Silica Quartz Group Ltd and the Group

	Salary & Fees	Short-Term Subsidiary Board and committee fees	Consultancy Fees	Post- employment benefits	Share-based Payments Performance Rights	Total	Percentage of remuneration consisting of performance rights
	\$	\$	\$	\$	\$	\$	%
2025							
Non-Executive Directors							
Robert Nash	59,778	21,991	-	9,403	48,676	139,848	35%
Luke Atkins ¹	23,946	21,991	342,425	5,283	129,804	523,449	25%
Neil Lithgow	23,946	21,991	-	5,283	48,676	99,896	49%
Pengfei Zhao	23,946	-	-	2,754	48,676	75,376	65%
Key Management Personnel							
Sam Middlemas ²	-	-	242,835	-	64,903	307,738	21%
Nick Algie	331,325	-	-	34,092	64,903	430,320	15%
Patrick Soh ³	-	-	55,350	-	16,225	71,575	23%
Total Remuneration	462,941	65,973	640,610	56,815	421,863	1,648,202	-
2024							
Non-Executive Directors							
Robert Nash	65,000	24,000	-	9,790	50,890	149,680	34%
Luke Atkins ¹	26,000	24,000	348,000	5,500	135,704	539,204	25%
Neil Lithgow	26,000	24,000	-	5,500	50,890	106,390	48%
Pengfei Zhao	26,000	-	-	2,860	50,890	79,750	64%
Key Management Personnel							
Sam Middlemas ²	-	-	220,480	-	67,855	288,335	24%
Nick Algie	308,000	-	-	33,880	67,855	409,735	17%
Patrick Soh ³	-	-	68,640	-	16,964	85,604	20%
Total Remuneration	451,000	72,000	637,120	57,530	441,048	1,658,698	-

Notes:

- (1) Mr Atkins receives consulting fees through his related entity Executive Resource Personnel Pty Ltd.
- (2) Mr Middlemas receives consulting fees through his related entity Sparkling Resources Pty Ltd.
- (3) Mr Soh receives consulting fees through his related entity Soh & Associates Pty Ltd.

Directors' Report cont.

D Share-based compensation

Options or performance rights may be issued to directors and executives as part of their remuneration. The options are not issued based on performance criteria, but are issued to certain directors (determined by the Board) and executives of Australian Silica Quartz Group Ltd to increase goal congruence between executives, directors and shareholders. Performance rights are issued with specific performance criteria required to be achieved. The Company does not have a formal policy in relation to the key management personnel limiting their exposure to risk in relation to the securities, but the Board actively discourages key personnel management from obtaining mortgages in securities held in the Company.

The following performance rights were granted to or vested with key management personnel during the past 3 years (Please see section F regarding vesting or expiry of rights):

	Grant Date	Granted Number	Vested Number as at 30 June 2025	Date vesting or vested and exercisable	Expiry Date	Exercise Price (cents)	Value per performance rights	Exercised Number
2023								
Performance Rights								
Tranche 1 ¹	23 Nov 2023	8,666,665	Nil	10 Dec 2024	1 Dec 2028	Nil	3.88c	Nil
Tranche 2 ²	23 Nov 2023	8,666,666	Nil	10 Dec 2025	1 Dec 2028	Nil	3.93c	Nil
Tranche 3 ³	23 Nov 2023	8,666,669	Nil	10 Dec 2026	1 Dec 2028	Nil	3.96c	Nil

Notes:

- (1) Tranche 1 Performance Rights: upon the Company's Shares reaching a 30 day VWAP which is greater than \$0.0622 per Share anytime during the period from 10 December 2023 to 10 December 2024; and continuous service of the Performance Rights holder in their capacity as a Director or Executive of the Company, or in a role as otherwise agreed by the Board of the Company, from the date of issue of the Performance Rights to 10 December 2024.
- (2) Tranche 2 Performance Rights: upon the Company's Shares reaching a 30 day VWAP which is greater than \$0.0684 per Share anytime during the period from 10 December 2024 to 10 December 2025; and continuous service of the Performance Rights holder in their capacity as a Director or Executive of the Company, or in a role as otherwise agreed by the Board of the Company, from the date of issue of the Performance Rights to 10 December 2025.
- (3) Tranche 3 Performance Rights: upon the Company's Shares reaching a 30 day VWAP which is greater than \$0.0746 per Share anytime during the period from 10 December 2025 to 10 December 2026; and continuous service of the Performance Rights holder in their capacity as a Director or Executive of the Company, or in a role as otherwise agreed by the Board of the Company, from the date of issue of the Performance Rights to 10 December 2026.

Directors' Report cont.

E Equity instrument disclosures relating to key management personnel

(i) Option holdings

There were no options over ordinary shares in the Company held during the financial year by each director of Australian Silica Quartz Group Ltd and other key management personnel of the Group (2024: Nil), including their personally related parties.

No Directors or key management personnel hold options in the Company.

(ii) Shareholdings

The numbers of shares in the Company held during the financial year by each director of Australian Silica Quartz Group Ltd and other key management personnel of the Group, including their personally related parties, are set out below. There were no shares granted during the reporting period as compensation.

Ordinary shares	Balance at start of the year	Performance Share Vested	Share Purchase Plan	Other changes during the year	Balance at end of the year
2025					
Directors of Australian Silica Quartz Group Ltd					
Robert Nash	1,245,714	-	-	-	1,245,714
Luke Atkins	26,924,063	-	-	-	26,924,063
Neil Lithgow	22,385,148	-	-	-	22,385,148
Pengfei Zhao	1,000,000	-	-	-	1,000,000
Other key management personnel of the Company					
Sam Middlemas	11,879,252	-	-	-	11,879,252
Nick Algie	2,011,424	-	-	-	2,011,424
Patrick Soh	333,333	-	-	-	333,333
2024					
Directors of Australian Silica Quartz Group Ltd					
Robert Nash	1,215,714	-	-	30,000	1,245,714
Luke Atkins	26,821,604	-	-	102,459	26,924,063
Neil Lithgow	22,385,148	-	-	-	22,385,148
Pengfei Zhao	1,000,000	-	-	-	1,000,000
Other key management personnel of the Company					
Sam Middlemas	11,879,252	-	-	-	11,879,252
Nick Algie	2,011,424	-	-	-	2,011,424
Patrick Soh	333,333	-	-	-	333,333

No other Directors or key management personnel have shareholdings in the Company.

Directors' Report cont.

F Performance Right holdings

The number of performance rights in the Company held during the financial year by each director of Australian Silica Quartz Group Ltd and other key management personnel of the Group, including their personally related parties, are set out below:

	Balance at start of the year	Granted as compensation	Lapsed during the year	Vested and exercised	Balance at end of the year	Unvested
2025						
Directors of Australian Silica Quartz Group Ltd						
Robert Nash	3,000,000	-	(1,000,000)	-	2,000,000	2,000,000
Luke Atkins	8,000,000	-	(2,666,666)	-	5,333,334	5,333,334
Neil Lithgow	3,000,000	-	(1,000,000)	-	2,000,000	2,000,000
Pengfei Zhao	3,000,000	-	(1,000,000)	-	2,000,000	2,000,000
Other key management personnel of the Company						
Sam Middlemas	4,000,000	-	(1,333,333)	-	2,666,667	2,666,667
Nick Algie	4,000,000	-	(1,333,333)	-	2,666,667	2,666,667
Patrick Soh	1,000,000	-	(333,333)	-	666,667	666,667
2024						
Directors of Australian Silica Quartz Group Ltd						
Robert Nash	1,000,000	3,000,000	(1,000,000)	-	3,000,000	3,000,000
Luke Atkins	2,666,667	8,000,000	(2,666,667)	-	8,000,000	8,000,000
Neil Lithgow	1,000,000	3,000,000	(1,000,000)	-	3,000,000	3,000,000
Pengfei Zhao	1,000,000	3,000,000	(1,000,000)	-	3,000,000	3,000,000
Other key management personnel of the Company						
Sam Middlemas	1,333,334	4,000,000	(1,333,334)	-	4,000,000	4,000,000
Nick Algie	1,333,334	4,000,000	(1,333,334)	-	4,000,000	4,000,000
Patrick Soh	333,334	1,000,000	(333,334)	-	1,000,000	1,000,000

No other Directors or key management personnel have performance rights in the Company.

G Loans to key management personnel

The Company previously provided an interest free loan of \$200,000 to the Chief Executive Officer, Sam Middlemas to reimburse the purchase of shares in Australian Silica Quartz Group Ltd to be repaid earlier of 10 October 2026, or sale of shares, or within 3 months of Consultancy agreement being terminated. The amount of interest that would have been charged on an arm's-length basis is approximately \$8,000 for the 30 June 2025 financial year.

H Other transactions with key management personnel

Luke Atkins provided business and projects advice to Australian Silica Quartz Group Ltd during the year under an agreement and was paid a fee of \$342,425 (2024: \$348,000). This amount paid was on arm's-length commercial terms and is included as part of the compensation.

The office premises that the Company rents for its registered office and principal place of business is owned by Non-Executive Director, Luke Atkin's Mother. During the year the Company paid \$52,670 (2024: \$52,700) rent and outgoings on normal commercial terms and conditions.

Directors' Report cont.

I Additional information

DIRECTORS' MEETINGS

During the year the Company held 6 meetings of directors. The attendance of directors at meetings of the Board were:

	Directors meetings		Committee meetings			
	Held	Attended	Audit		Remuneration	
	Held	Attended	Held	Attended	Held	Attended
Robert Nash	6	6	2	2	1	1
Luke Atkins	6	6	2	2	1	1
Neil Lithgow	6	6	2	2	1	1
Pengfei Zhao	6	5	N/A	N/A	N/A	N/A

SHARES UNDER OPTION

There were no options on issue at the end of the financial year and there were no new options issued, or cancelled during the year.

As at 30 June 2025 there were the 17,333,335 (2024 – 26,000,000) performance rights on issue. During the year 8,666,665 performance expired with the VWAP Share price performance hurdle not being achieved.

INSURANCE OF DIRECTORS AND OFFICERS

During or since the financial year, the Company has paid premiums insuring all the directors of Australian Silica Quartz Group Ltd against costs incurred in defending proceedings for conduct other than:

- (a) a wilful breach of duty; or
- (b) a contravention of sections 182 or 183 of the Corporations Act 2001,

as permitted by section 199B of the Corporations Act 2001. Under the terms and conditions of the insurance contract, the premium paid cannot be disclosed.

NON AUDIT SERVICES

No non audit services were provided by the entity's auditor, Moore Australia Audit (WA) or associated entities during the year ended 30 June 2025 or 30 June 2024.

CORPORATE GOVERNANCE

In accordance with ASX Listing Rule 4.10.3 the Company has elected to publish its corporate governance statement on its website. The corporate governance statement can be found at <http://www.asgq.com.au/corporate-governance>.

Directors' Report cont.

AUDITOR'S INDEPENDENCE DECLARATION

A copy of the auditor's independence declaration as required under section 307C of the Corporations Act 2001 is set out on page 28.

Signed in accordance with a resolution of the directors.

A handwritten signature in black ink, appearing to read 'R. Nash', with a small dot at the end.

Robert Nash


Chairman

Perth, 18th September 2025

Auditor's Independence Declaration
Under Section 307c of the Corporations Act 2001**To the directors of Australian Silica Quartz Group Limited**

I declare that, to the best of my knowledge and belief, during the year ended 30 June 2025, there have been:

- a) no contraventions of the auditor independence requirements of the *Corporations Act 2001* in relation to the audit, and
- b) no contraventions of any applicable code of professional conduct in relation to the audit.



Neil Pace
Partner – Audit and Assurance
[Moore Australia Audit \(WA\)](#)
Perth
18th day of September 2025



Moore Australia Audit (WA)
Chartered Accountants

Statement of Profit or Loss and Other Comprehensive Income

Year Ended 30 June 2025

	Notes	Consolidated Group	
		2025 \$	2024 \$
Recoupment of exploration costs	4	293,204	1,166,184
Other income	4	231,822	252,033
Interest income	4	41,659	118,954
Employee benefits expense		(251,699)	(230,757)
Exploration expenses as incurred		(1,107,229)	(1,431,813)
Consultants fees		(423,908)	(407,965)
Administration expenses	5	(270,637)	(239,042)
Depreciation and amortisation expense	10	(12,933)	(20,693)
Reversal of impairment - property	10	-	403,591
Share-based payments expense	13	(421,863)	(441,048)
Profit / (loss) before income tax		(1,921,584)	(830,556)
Income tax expense	6	-	-
Profit / (loss) for the period		(1,921,584)	(830,556)
Other comprehensive income			
Gain on revaluation of property		-	581,409
Other comprehensive income for the period, net of tax		-	581,409
Total comprehensive income/(loss) for the period		(1,921,584)	(249,147)
Loss for the period is attributable to:			
Owners of Australian Silica Quartz Group Ltd		(1,921,584)	(249,147)
Earnings per share			
From continuing operations:			
Basic earnings per share (cents)	25	(0.68)	(0.29)
Diluted earnings per share (cents)	25	(0.68)	(0.29)

The above statements should be read in conjunction with the notes to the financial statements.

Statement of Financial Position

At 30 June 2025

	Notes	Consolidated Group	
		2025 \$	2024 \$
CURRENT ASSETS			
Cash and cash equivalents	7	836,759	2,397,542
Trade and other receivables	8	92,184	171,837
TOTAL CURRENT ASSETS		928,943	2,569,379
NON CURRENT ASSETS			
Other financial assets	9	213,000	213,000
Property, plant and equipment	10	3,272,597	3,285,530
TOTAL NON CURRENT ASSETS		3,485,597	3,498,530
TOTAL ASSETS		4,414,540	6,067,909
CURRENT LIABILITIES			
Trade and other payables	11(a)	53,773	80,098
Unearned revenue	11(b)	-	123,835
Provisions	11(c)	47,132	50,620
TOTAL CURRENT LIABILITIES		100,905	254,553
TOTAL LIABILITIES		100,905	254,553
NET ASSETS		4,313,635	5,813,356
EQUITY			
Contributed equity	12	60,299,561	60,299,561
Reserves	13(a)	3,525,821	3,103,958
(Accumulated losses)	13(b)	(59,511,747)	(57,590,163)
TOTAL EQUITY		4,313,635	5,813,356

The above statements should be read in conjunction with the notes to the financial statements.

Statement of Changes in Equity

Year Ended 30 June 2025

Consolidated Group	Issued Ordinary Capital	Reserves	Accumulated Losses	Total
	\$	\$	\$	\$
Balance at 1 July 2023	60,289,696	2,081,501	(56,759,607)	5,611,590
Loss for the period	-	-	(830,556)	(830,556)
Other comprehensive income	-	581,409	-	581,409
Total comprehensive income for the period	-	581,409	(830,556)	(249,147)
Shares issued during the year	10,000	-	-	10,000
Share issue costs	(135)	-	-	(135)
Performance rights value for the period	-	441,048	-	441,048
Balance at 30 June 2024	60,299,561	3,103,958	(57,590,163)	5,813,356
Loss for the period	-	-	(1,921,584)	(1,921,584)
Other comprehensive income	-	-	-	-
Total comprehensive income for the period	-	-	(1,921,584)	(1,921,584)
Performance rights value for the period	-	421,863	-	421,863
Balance at 30 June 2025	60,299,561	3,525,821	(59,511,747)	4,313,635

The above statements should be read in conjunction with the notes to the financial statements.

Statement of Cash Flow

Year Ended 30 June 2025

	Notes	Consolidated Group	
		2025 \$	2024 \$
CASH FLOWS FROM OPERATING ACTIVITIES			
Receipts from customers		459,178	1,604,463
Payments to suppliers and employees		(938,804)	(895,440)
Payments for exploration expenditure		(1,128,732)	(1,383,955)
Interest received		47,575	122,557
NET CASH (OUTFLOW) FROM OPERATING ACTIVITIES	24	(1,560,783)	(552,375)
CASH FLOWS FROM INVESTING ACTIVITIES			
Payment of security deposit		-	(9,000)
Payments for property, plant and equipment		-	(3,057)
NET CASH (OUTFLOW) FROM INVESTING ACTIVITIES		-	(12,057)
CASH FLOWS FROM FINANCING ACTIVITY			
Capital raising costs		-	(135)
NET CASH OUTFLOW FROM FINANCING ACTIVITY		-	(135)
NET (DECREASE) IN CASH AND CASH EQUIVALENTS		(1,560,783)	(564,567)
Cash and cash equivalents at the beginning of the financial year		2,397,542	2,962,109
CASH AND CASH EQUIVALENTS AT THE END OF THE FINANCIAL YEAR	7	836,759	2,397,542

The above statements should be read in conjunction with the notes to the financial statements.

Notes to the Financial Statements

1 MATERIAL ACCOUNTING POLICY INFORMATION

This financial report includes the consolidated financial statements and notes of Australian Silica Quartz Group Ltd and controlled entities ("Consolidated Group" or "Group"). The financial statements were authorised for issue on 18 September 2025 by the directors of the Company.

(a) Basis of preparation

This general purpose financial report has been prepared in accordance with Australian Accounting Standards and issued by the Accounting Standards Board ("AASB") Interpretations and the Corporations Act 2001. The Group is a for-profit entity for financial reporting purposes under Australian Accounting Standards.

Compliance with IFRS

Australian Accounting Standards include Australian equivalents to International Financial Reporting Standards ("AIFRS"). Compliance with AIFRS ensures that the financial report of Australian Silica Quartz Group Ltd complies with International Financial Reporting Standards ("IFRS").

Historical cost convention

These financial statements have been prepared under the historical cost convention, as modified by the revaluation of available-for-sale financial assets, financial assets and liabilities (including derivative instruments) at fair value through profit or loss, certain classes of property, plant and equipment. The financial report is presented in Australian dollars.

(b) New, revised and amended accounting standards and interpretations adopted

In the year ended 30 June 2025, the directors have reviewed all the new and revised Standards and Interpretations issued by the AASB that are relevant to its operations and effective for the current annual reporting period. The directors have also reviewed all new Standards and Interpretations that have been issued but are not yet effective for the year ended 30 June 2025.

The directors have assessed that the new standards do not materially affect the Group's financial statements for the year ended 30 June 2025 or beyond.

(c) Principles of consolidation

Subsidiaries

The consolidated financial statements incorporate the assets and liabilities of all subsidiaries of Australian Silica Quartz Group Ltd ("Company" or "parent entity") as at 30 June 2025 and the results of all subsidiaries for the year then ended. Australian Silica Quartz Group Ltd and its subsidiaries together are referred to in these financial statements as the 'consolidated entity'.

Subsidiaries are all those entities over which the consolidated entity has control. The consolidated entity controls an entity when the consolidated entity is exposed to, or has rights to, variable returns from its involvement with the entity and has the ability to affect those returns through its power to direct the activities of the entity. Subsidiaries are fully consolidated from the date on which control is transferred to the consolidated entity. They are de-consolidated from the date that control ceases.

Intercompany transactions, balances and unrealised gains on transactions between entities in the consolidated entity are eliminated. Unrealised losses are also eliminated unless the transaction provides evidence of the impairment of the asset transferred. Accounting policies of subsidiaries have been changed where necessary to ensure consistency with the policies adopted by the consolidated entity.

The acquisition of subsidiaries is accounted for using the acquisition method of accounting. A change in ownership interest, without the loss of control, is accounted for as an equity transaction, where the difference between the consideration transferred and the book value of the share of the non-controlling interest acquired is recognised directly in equity attributable to the parent.

Non-controlling interest in the results and equity of subsidiaries are shown separately in the statement of profit or loss and other comprehensive income, statement of financial position and statement of changes in equity of the consolidated entity. Losses incurred by the consolidated entity are attributed to the non-controlling interest in full, even if that results in a deficit balance.

Where the consolidated entity loses control over a subsidiary, it derecognises the assets including goodwill, liabilities and non-controlling interest in the subsidiary together with any cumulative translation differences recognised in equity. The consolidated entity recognises the fair value of the consideration received and the fair value of any investment retained together with any gain or loss in profit or loss.

Notes to the Financial Statements cont.

Associates

Associates are entities over which the consolidated entity has significant influence but not control or joint control. Investments in associates are accounted for using the equity method. Under the equity method, the share of the profits or losses of the associate is recognised in profit or loss and the share of the movements in equity is recognised in other comprehensive income. Investments in associates are carried in the statement of financial position at cost plus post-acquisition changes in the consolidated entity's share of net assets of the associate. Goodwill relating to the associate is included in the carrying amount of the investment and is neither amortised nor individually tested for impairment. Dividends received or receivable from associates reduce the carrying amount of the investment.

When the consolidated entity's share of losses in an associate equals or exceeds its interest in the associate, including any unsecured long-term receivables, the consolidated entity does not recognise further losses, unless it has incurred obligations or made payments on behalf of the associate.

The consolidated entity discontinues the use of the equity method upon the loss of significant influence over the associate and recognises any retained investment at its fair value. Any difference between the associate's carrying amount, fair value of the retained investment and proceeds from disposal is recognised in profit or loss.

(d) Interests in joint ventures arrangements

Joint arrangements represent the contractual sharing of control between parties in a business venture where unanimous decisions about relevant activities are required.

Separate joint venture entities providing joint venturers with an interest to net assets are classified as a joint venture and accounted for using the equity method. Refer to Note 1(c) for a description of the equity method of accounting.

Joint venture operations represent arrangements whereby joint operators maintain direct interests in each asset and exposure to each liability of the arrangement. The Group's interests in the assets, liabilities, revenue and expenses of joint operations are included in the respective line items of the consolidated financial statements.

Gains and losses resulting from sales to a joint operation are recognised to the extent of the other parties' interests. When the Group makes purchases from a joint operation, it does not recognise its share of the gains and losses from the joint arrangement until it resells those goods/assets to a third party.

(e) Segment reporting

A business segment is identified for a group of assets and operations engaged in providing products or services that are subject to risks and returns that are different to those of other business segments. A geographical segment is identified when products or services are provided within a particular economic environment subject to risks and returns that are different from those of segments operating in other economic environments.

(f) Income tax

The income tax expense or revenue for the period is the tax payable on the current period's taxable income based on the national income tax rate for each jurisdiction adjusted by changes in deferred tax assets and liabilities attributable to temporary differences and to unused tax losses.

Deferred income tax is provided in full, using the liability method, on temporary differences arising between the tax bases of assets and liabilities and their carrying amounts in the consolidated financial statements. However, the deferred income tax is not accounted for if it arises from initial recognition of an asset or liability in a transaction other than a business combination that at the time of the transaction affects neither accounting nor taxable profit or loss. Deferred income tax is determined using tax rates (and laws) that have been enacted or substantially enacted by the balance sheet date and are expected to apply when the related deferred income tax asset is realised or the deferred income tax liability is settled.

Deferred tax assets are recognised for deductible temporary differences and unused tax losses only if it is probable that future taxable amounts will be available to utilise those temporary differences and losses.

Deferred tax liabilities and assets are not recognised for temporary differences between the carrying amount and tax bases of investments in controlled entities where the parent entity is able to control the timing of the reversal of the temporary differences and it is probable that the differences will not reverse in the foreseeable future.

Deferred tax assets and liabilities are offset when there is a legally enforceable right to offset current tax assets and liabilities and when the deferred tax balances relate to the same taxation authority. Current tax assets and tax liabilities are offset where the entity has a legally enforceable right to offset and intends either to settle on a net basis, or to realise the asset and settle the liability simultaneously.

Current and deferred tax balances attributable to amounts recognised directly in equity are also recognised directly in equity.

Notes to the Financial Statements cont.

(g) Revenue

Revenue recognition

Revenue is measured at the fair value of the consideration received or receivable after taking into account any trade discounts and volume rebates allowed. Any consideration deferred is treated as the provision of finance and is discounted at a rate of interest that is generally accepted in the market for similar arrangements. The difference between the amount initially recognised and the amount ultimately received is interest revenue.

Revenue from the sale of goods is recognised at the point of delivery as this corresponds to the transfer of significant risks and rewards of ownership of the goods and the cessation of all involvement in those goods.

Interest revenue is recognised using the effective interest rate method, which, for floating rate financial assets, is the rate inherent in the instrument.

R&D Tax incentives have been accounted for as government grant revenue. Government grants are recognised at fair value where there is reasonable assurance that the grant will be received and all grant conditions will be met. Where it is expected that a grant will be repaid if certain conditions are met, the liability to repay the grant is recognised as the conditions are met and the liability crystallises.

(h) Financial Instruments

The Group measures a financial asset at its fair value plus, in the case of a financial asset not at fair value through profit or loss (FVPL), transaction costs that are directly attributable to the acquisition of the financial asset. Transaction costs of financial assets carried at FVPL are expensed in profit or loss.

Assets that are held for collection of contractual cash flows where those cash flows represent solely payments of principal and interest are measured at amortised cost. Interest income from these financial assets is included in finance income using the effective interest rate method. Any gain or loss arising on derecognition is recognised directly in profit or loss and presented in other gains/(losses) together with foreign exchange gains and losses. Impairment losses are presented as separate line item in the statement of profit or loss.

The Group subsequently measures all equity investments at fair value. The Group has not elected to present fair value gains and losses on equity investments in OCI, where there is no subsequent reclassification of fair value gains and losses to profit or loss following the derecognition of the investment. Dividends from such investments continue to be recognised in profit or loss as other income when the group's right to receive payments is established.

As per AASB 9, an expected credit loss model is applied, not an incurred credit loss model as per AASB 139. To reflect changes in credit risk, this expected credit loss model requires the Group to account for expected credit loss since initial recognition.

For trade receivables, the Group applies the simplified approach permitted by AASB 9, which requires expected lifetime losses to be recognised from initial recognition of the receivables. In measuring the expected credit loss, a provision matrix for trade receivables was used taking into consideration various data to get to an expected credit loss (i.e. diversity of customer base, appropriate groupings of historical loss experience, etc).

(i) Leases

The Group as lessee

At inception of a contract, the Group assesses if the contract contains a lease or is a lease. If there is a lease present, a right-of-use asset and a corresponding lease liability are recognised by the Group where the Group is a lessee. However, all contracts that are classified as short-term leases (i.e. a lease with a remaining lease term of 12 months or less) and leases of low-value assets are recognised as an operating expenses on a straight-line basis over the term of the lease.

Initially the lease liability is measured at the present value of the lease payments still to be paid at the commencement date. The lease payments are discounted at the interest rate implicit in the lease. If this rate cannot be readily determined, the Group uses the incremental borrowing rate.

Notes to the Financial Statements cont.

Lease payments included in the measurement of the lease liability are as follows:

- fixed lease payments less any lease incentives;
- variable lease payments that depend on an index or rate, initially measured using the index or rate at the commencement date;
- the amount expected to be payable by the lessee under residual value guarantees;
- the exercise price of purchase options, if the lessee is reasonably certain to exercise the options;
- lease payments under extension options, if the lessee is reasonably certain to exercise the options; and
- payments of penalties for terminating the lease, if the lease term reflects the exercise of an option to terminate the lease.

The right-of-use assets comprise the initial measurement of the corresponding lease liability, any lease payments made at or before the commencement date and any initial direct costs. The subsequent measurement of the right-of-use assets is at cost less accumulated depreciation and impairment losses.

Right-of-use assets are depreciated over the lease term or useful life of the underlying asset, whichever is the shortest. Where a lease transfers ownership of the underlying asset or the cost of the right-of-use asset reflects that the Group anticipates to exercise a purchase option, the specific asset is depreciated over the useful life of the underlying asset.

Where a lease transfers ownership of the underlying asset or the cost of the right-of-use asset reflects that the Group anticipates to exercise a purchase option, the specific asset is depreciated over the useful life of the underlying asset.

(j) Impairment of assets

Goodwill and intangible assets that have an indefinite useful life are not subject to amortisation and are tested annually for impairment, or more frequently if events or changes in circumstances indicate that they might be impaired. Other assets are reviewed for impairment whenever events or changes in circumstances indicate that the carrying amount may not be recoverable. An impairment loss is recognised for the amount by which the asset's carrying amount exceeds its recoverable amount. The recoverable amount is the higher of an asset's fair value less costs to sell and value in use. For the purposes of assessing impairment, assets are grouped at the lowest levels for which there are separately identifiable cash inflows which are largely independent of the cash inflows from other assets or groups of assets (cash-generating units). Non-financial assets other than goodwill that suffered impairment are reviewed for possible reversal of the impairment at each reporting date.

(k) Cash and cash equivalents

For cash flow statement presentation purposes, cash and cash equivalents includes cash on hand, deposits held at call with financial institutions, other short term highly liquid investments with original maturities of three months or less that are readily convertible to known amounts of cash and which are subject to insignificant risk of changes in value, and bank overdrafts.

(l) Trade and other receivables

Receivables are recognised and carried at original invoice amount less a provision for expected credit loss (ECL). Bad debts are written-off as incurred.

As per AASB 9, an expected credit loss model is applied, not an incurred credit loss model as per AASB 139. To reflect changes in credit risk, this expected credit loss model requires the Group to account for expected credit loss since initial recognition.

For trade receivables, The Group applies the simplified approach permitted by AASB 9, which requires expected lifetime losses to be recognised from initial recognition of the receivables. In measuring the expected credit loss, a provision matrix for trade receivables was used taking into consideration various data to get to an expected credit loss (i.e. diversity of customer base, appropriate groupings of historical loss experience, etc).

Notes to the Financial Statements cont.

(m) Property, plant and equipment

Property

Freehold land and buildings are carried at fair value less, where applicable, any accumulated depreciation and impairment losses. Fair values are based on independent valuations or appraisals obtained periodically or on Directors' valuations during the intervening periods. Increases in the carrying amount arising on revaluation of land and buildings are credited to a revaluation surplus in equity. Decreases that offset previous increases of the same asset are recognised against revaluation surplus directly in equity; all other decreases are recognised in profit or loss. However, any increase is recognised in profit or loss to the extent that it reverses a revaluation decrease of the same asset previously recognised in profit or loss.

Plant and equipment

All plant and equipment is stated at historical cost less depreciation. Historical cost includes expenditure that is directly attributable to the acquisition of the items.

Subsequent costs are included in the asset's carrying amount or recognised as a separate asset, as appropriate, only when it is probable that future economic benefits associated with the item will flow to the Group and the cost of the item can be measured reliably. The carrying amount of the replaced part is derecognised. All other repairs and maintenance are charged to the income statement during the reporting period in which they are incurred.

Depreciation

The depreciable amount of all fixed assets excluding freehold land, is depreciated using the reducing balance method to allocate their cost, net of their residual values, over their estimated useful lives. Buildings are depreciated on a straight line basis.

The depreciation rates for each class of depreciable assets are:

Plant & equipment	8%-67%	Motor vehicles	25%
Buildings	2.5%		

The assets' residual values and useful lives are reviewed, and adjusted if appropriate, at each balance sheet date.

An asset's carrying amount is written down immediately to its recoverable amount if the asset's carrying amount is greater than its estimated recoverable amount (Note 1(j)).

Gains and losses on disposals are determined by comparing proceeds with carrying amount. These are included in the income statement. When revalued assets are sold, it is Group policy to transfer the amounts included in other reserves in respect of those assets to retained earnings.

(n) Tenement acquisition and exploration costs

Tenement acquisition and exploration costs incurred are written off as incurred.

(o) Trade and other payables

These amounts represent liabilities for goods and services provided to the Group prior to the end of the financial year which are unpaid. The amounts are unsecured and are paid on normal commercial terms.

(p) Employee benefits

(i) Wages and salaries and annual leave

Liabilities for wages and salaries, including non-monetary benefits, and annual leave expected to be settled within 12 months of the balance sheet date are recognised in other payables in respect of employees' services up to the balance sheet date and are measured at the amounts expected to be paid when the liabilities are settled.

Notes to the Financial Statements cont.

(ii) Share-based payments

The Group provides benefits to employees (including directors) of the Group in the form of share-based payment transactions, whereby employees render services in exchange for shares or rights over shares ('equity-settled transactions'), refer to Note 26.

The cost of these equity-settled transactions with employees is measured by reference to the fair value at the date at which they are granted. The fair value is determined by an internal valuation using a Black-Scholes or binomial option pricing model.

The cost of equity-settled transactions is recognised, together with a corresponding increase in equity, over the period in which the performance conditions are fulfilled, ending on the date on which the relevant employees become fully entitled to the award ('vesting date').

The cumulative expense recognised for equity-settled transactions at each reporting date until vesting date reflects (i) the extent to which the vesting period has expired and (ii) the number of options that, in the opinion of the directors of the Group, will ultimately vest. This opinion is formed based on the best available information at balance date. No adjustment is made for the likelihood of market performance conditions being met as the effect of these conditions is included in the determination of fair value at grant date.

No expense is recognised for awards that do not ultimately vest, except for awards where vesting is conditional upon a market condition.

Where an equity-settled award is cancelled, it is treated as if it had vested on the date of cancellation, and any expense not yet recognised for the award is recognised immediately. However, if a new award is substituted for the cancelled award, and designated as a replacement award on the date that it is granted, the cancelled and new award are treated as if they were a modification of the original award.

(q) Contributed equity

Ordinary shares are classified as equity

Incremental costs directly attributable to the issue of new shares or options are shown in equity as a deduction, net of tax, from the proceeds. Incremental costs directly attributable to the issue of new shares or options for the acquisition of a business are not included in the cost of the acquisition as part of the purchase consideration.

The amount expended on the on-market buy-back of shares is debited to the share capital account to the extent of share capital available. Should the amount expended on on-market share buy-backs exceed the amount of available share capital, the remainder will be debited against distributable reserves.

(r) Earnings per share

(i) Basic earnings per share

Basic earnings per share is calculated by dividing the profit attributable to equity holders of the company, excluding any costs of servicing equity other than ordinary shares, by the weighted average number of ordinary shares outstanding during the financial year, adjusted for bonus elements in ordinary shares issued during the year.

(ii) Diluted earnings per share

Diluted earnings per share adjusts the figures used in the determination of basic earnings per share to take into account the after income tax effect of interest and other financing costs associated with dilutive potential ordinary shares and the weighted average number of shares assumed to have been issued for no consideration in relation to dilutive potential ordinary shares.

(s) Goods and Services Tax ("GST")

Revenues, expenses and assets are recognised net of the amount of associated GST, unless the GST incurred is not recoverable from the taxation authority. In this case it is recognised as part of the cost of acquisition of the asset or as part of the expense.

Receivables and payables are stated inclusive of the amount of GST receivable or payable. The net amount of GST recoverable from, or payable to, the taxation authority is included with other receivables or payables in the balance sheet.

Cash flows are presented on a gross basis. The GST components of cash flows arising from investing or financing activities which are recoverable from, or payable to the taxation authority, are presented as operating cash flows.

(t) New accounting standards for application in future periods

Australian Accounting Standards and Interpretations that have recently been issued or amended but are not yet mandatory, have not been early adopted by the consolidated entity for the annual reporting period ended 30 June 2025. These standard are not expected to have a material impact on the entity in the current or future reporting periods and on foreseeable future transactions.

Notes to the Financial Statements cont.

(u) Critical accounting estimates and judgements

The preparation of financial statements in conformity with AIFRS requires the use of certain critical accounting estimates. It also requires management to exercise its judgement in the process of applying the Group's accounting policies. The areas involving a higher degree of judgement or complexity, or areas where assumptions and estimates are significant to the financial statements are:

Share based payment transactions

The Group measures the cost of equity-settled transactions with employees by reference to the fair value of the equity instruments at the date at which they are granted. The fair value is determined by an internal valuation using a Black-Scholes or binomial option pricing model, using the assumptions detailed in Note 26.

Impairment of assets

The Group assesses impairment at the end of each reporting period by evaluating conditions and events specific to the Group that may be indicative of impairment triggers. Recoverable amounts of relevant assets are reassessed using estimated net realisable values which incorporate various assumptions such as current indicative values and expected future cash inflows.

2 FINANCIAL RISK MANAGEMENT

The Group's activities potentially expose it to a variety of financial risks: market risk (including currency risk, interest rate risk and price risk), credit risk and liquidity risk. The Group's overall risk management program focuses on the unpredictability of financial markets and seeks to minimise potential adverse effects on the financial performance of the Group.

Risk management is carried out by the full Board of Directors as the Group believes that it is crucial for all Board members to be involved in this process. The Chairman, with the assistance of senior management as required, has responsibility for identifying, assessing, treating and monitoring risks and reporting to the Board on risk management.

(a) Market risk

(i) Foreign exchange risk

As all operations are currently within Australia, the Group is not exposed to material foreign exchange risk.

(ii) Price risk

The Group is not exposed to any significant price risk.

(iii) Interest rate risk

The Group is exposed to movements in market interest rates on cash and cash equivalents. The Group policy is to monitor the interest rate yield curve out to six months to ensure a balance is maintained between the liquidity of cash assets and the interest rate return. The entire balance of cash and cash equivalents for the Group and the parent entity \$836,759 (2024: \$2,397,542) is subject to interest rate risk. The proportional mix of floating interest rates and fixed rates to a maximum of six months fluctuate during the year depending on current working capital requirements. The weighted average interest rate received on cash and cash equivalents by the Group and the parent entity was 3.10% (2024: 4.00%).

Sensitivity analysis

At 30 June 2025, if interest rates had changed by +/- 80 basis points from the weighted average rate for the year with all other variables held constant, post-tax loss for both the Group and the parent entity would have been \$10,754 lower/higher (2024: \$23,818 lower/higher) as a result of lower/higher interest income from cash and cash equivalents.

(b) Credit risk

Exposure to credit risk relating to financial assets arises from the potential non-performance by counterparties of contract obligations that could lead to a financial loss to the Group.

Credit risk is managed through the maintenance of procedures (such procedures include the utilisation of systems for the approval, granting and renewal of credit limits, regular monitoring of exposures against such limits and monitoring of the financial stability of significant customers and counterparties), ensuring to the extent possible, that customers and counterparties to transactions are of sound credit worthiness. Such monitoring is used in assessing receivables for impairment.

Risk is also minimised through investing surplus funds in financial institutions that maintain a high credit rating, or in entities that the Board has otherwise cleared as being financially sound. Where the Group is unable to ascertain a satisfactory credit risk profile in relation to a customer or counterparty, the risk may be further managed through title retention clauses over goods or obtaining security by way of personal or commercial guarantees over assets of sufficient value which can be claimed against in the event of any default.

Notes to the Financial Statements cont.

(c) Liquidity risk

The Group manages liquidity risk by continuously monitoring forecast and actual cash flows and ensuring sufficient cash and marketable securities are available to meet the current and future commitments of the Group. Due to the nature of the Group's activities, being mineral exploration, the Group does not have ready access to credit facilities, with the primary source of funding being equity raisings. The Board of Directors constantly monitor the state of equity markets in conjunction with the Group's current and future funding requirements, with a view to initiating appropriate capital raisings as required.

The financial liabilities of the Group and the parent entity are confined to trade and other payables as disclosed in the Balance Sheet. All trade and other payables are non-interest bearing and due within 12 months of the balance sheet date. Given the relative size of the cash reserves, the Group is not currently exposed to any significant liquidity risk.

3 PARENT ENTITY FINANCIAL INFORMATION

(a) Summary financial information

	2025 \$	2024 \$
Current assets	928,942	2,569,380
Non-current assets	5,633,529	4,683,069
Total assets	6,562,471	7,252,449
Current liabilities	100,905	130,719
Total liabilities	100,905	130,719
Net assets	6,461,566	7,121,730
Shareholders' equity		
Contributed equity	60,299,561	60,299,561
Reserves	2,944,412	2,522,549
Accumulated (loss)	(56,782,407)	(55,700,380)
Net equity	6,461,566	7,121,730
(Loss) for the year after tax	(1,082,027)	(1,016,368)
Total comprehensive (loss)	(1,082,027)	(1,016,368)

(b) Guarantees entered into by parent entity

	2025 \$	2024 \$
Unconditional performance bonds issued in relation to credit card and rental obligations	-	-

The Company has no Guarantees in place (2024 - \$Nil).

(c) Contingent Liabilities of parent entity

Details and estimate of maximum amounts of contingent liabilities for which no provision is included in the accounts are as follows:

	2025 \$	2024 \$
Unconditional performance bonds issued in relation to credit card and rental obligations	-	-

The Company has no contingent liabilities (2024 \$Nil) other than those disclosed in Note 19.

(d) Contractual commitments for the acquisition of property, plant and equipment

The Company has no contractual commitments for the acquisition of property, plant and equipment (2024: Nil).

Notes to the Financial Statements cont.

4 REVENUE

Consolidated Group		
	2025	2024
	\$	\$
Reimbursement of exploration costs	293,204	1,166,184
R&D Refund	179,816	181,489
Other revenue	52,006	70,544
Interest	41,659	118,954
	566,685	1,537,171

5 PROFIT/(LOSS) FOR THE YEAR

Expenses

Consolidated Group		
	2025	2024
	\$	\$
Lease payments	35,364	34,688
Other administration	235,273	204,354
	270,637	239,042

6 INCOME TAX EXPENSE

Consolidated Group		
	2025	2024
	\$	\$
(a) The components of tax expense/(benefit) at 25.0% (2024: 25.0%) comprise:		
Current tax	-	-
Deferred tax	-	-
Income tax expense reported in the statement of profit and loss and other comprehensive income	-	-
(b) Numerical reconciliation of income tax expense/(benefit) to prima facie tax expense/(benefit):		
(loss) before income tax expense/(benefit)	(1,921,584)	(249,147)
Prima facie tax expense/(benefit) on profit/(loss) from ordinary activities before income tax at 25.0% (2024: 25.0%)	(480,396)	(62,287)
Add tax effect of:		
- Non-allowable items	105,732	110,435
- Revenue losses not recognised	436,283	268,986
	61,619	317,134
Less tax effect of:		
- Non-assessable items	44,954	291,622
- Deferred tax balances not recognised	16,665	25,511
- Over provision for income tax in prior years	-	-
- Over provision for income tax in prior years – effect of reduction in corporate tax rate	-	-
- Losses recouped not previously recognised	-	-
Income tax expense reported in the statement of profit and Loss and other comprehensive income	-	-
(c) Deferred tax recognised at 25.0% (2024: 25.0%):		
Deferred tax liability:		
Accrued interest	-	(1,479)
Deferred tax asset:		
Carry forward revenue losses	-	1,479
Net deferred tax	-	-

Notes to the Financial Statements cont.

Consolidated Group		
	2025	2024
	\$	\$
(d) Deferred tax not recognised at 25.0% (2024: 25.0%):		
Deferred tax assets:		
Carry forward losses	14,529,676	14,096,863
Capital raising and restructuring costs	257	8,800
Property, plant & equipment	-	-
Provisions and accruals	16,408	16,711
	14,546,342	14,122,374

The tax benefits of the above Deferred Tax Assets will only be obtained if:

- (a) the company derives future assessable income of a nature and of an amount sufficient to enable the benefits to be utilised;
- (b) the company continues to comply with the conditions for deductibility imposed by law; and
- (c) no changes in income tax legislation adversely affect the company in utilising the benefits.

Tax consolidation

(i) Members of the tax consolidated group

Australian Silica Quartz Group Ltd and its wholly owned Australian resident subsidiaries have formed a tax consolidated group with effect from 10 June 2008. Australian Silica Quartz Group Ltd is the head entity of the tax consolidated group.

(ii) Tax effect accounting by members of the tax consolidated group

Measurement method adopted under UIG 1052 Tax Consolidated Accounting

The group has applied the Stand-Alone Taxpayer approach in determining the appropriate amount of current and deferred taxes recognised by members of the tax consolidated group. Each entity in the group recognises its own current and deferred tax assets and liabilities, except for any deferred tax assets resulting from unused tax losses and tax credits and any current tax liability. Deferred tax assets resulting from unused tax losses and tax credits and the current tax liability are assumed and recognised by the parent entity. The group has not entered into any tax sharing or funding agreements.

Notes to the Financial Statements cont.

7 CURRENT ASSETS - CASH AND CASH EQUIVALENTS

Consolidated Group		
	2025	2024
	\$	\$
Cash at bank and in hand	836,759	527,542
Short-term deposits	-	1,870,000
Cash and cash equivalents as shown in the balance sheet and the statement of cash flows	836,759	2,397,542

8 CURRENT ASSETS - TRADE AND OTHER RECEIVABLES

Consolidated Group		
	2025	2024
	\$	\$
Trade debtors	(1,103)	75,220
Accrued interest income	-	5,916
Prepayments	93,287	90,701
	92,184	171,837

The class of assets described as “trade and other receivables” is considered to be the main source of credit risk related to the Group.

The consolidated entity did not consider a credit risk on the aggregate balances after reviewing the credit terms of customers based on recent collection practices.

	Gross Amount		Past due but not impaired (days overdue)			
			< 30	31–60	61–90	> 90
2025						
Trade and debtors	(1,103)	(1,103)	-	-	-	-
2024						
Trade and debtors	75,220	12,791	7,491	54,938	-	-

9 NON-CURRENT ASSETS - OTHER FINANCIAL ASSETS

Consolidated Group		
	2025	2024
	\$	\$
Loan receivable ¹	200,000	200,000
Security deposit	13,000	13,000
	213,000	213,000

Note (1): Loan to CEO under consulting contract. Refer to Note G in Remuneration Report section of the Directors’ Report for the terms of the loan

Notes to the Financial Statements cont.

10 NON-CURRENT ASSETS - PROPERTY, PLANT AND EQUIPMENT

	Consolidated Group	
	2025 \$	2024 \$
Plant and equipment		
Cost	175,009	431,645
Accumulated depreciation	(147,412)	(391,115)
Net book amount	27,597	40,530
Plant and equipment		
Opening net book amount	40,530	58,165
Depreciation charge	(12,933)	(20,692)
Acquisition	-	3,057
Closing net book amount	27,597	40,530
Motor Vehicles		
Cost	4,787	4,787
Accumulated depreciation	(4,787)	(4,787)
Net book amount	-	-
Property and buildings		
At fair value	3,309,313	3,309,313
Accumulated depreciation	(64,313)	(64,313)
Net book amount	3,245,000	3,245,000
Property and buildings		
Opening net book amount	3,245,000	2,260,000
Reversal of impairment	-	403,591
Gain on revaluation of property	-	581,409
Closing net book amount	3,245,000	3,245,000
Total Assets		
Cost / fair value	3,489,109	3,745,745
Accumulated depreciation	(216,512)	(460,215)
Net book amount	3,272,597	3,285,530
Total Assets		
Opening net book amount	3,285,530	2,318,165
Depreciation charge	(12,933)	(20,692)
Acquisition	-	3,057
Reversal of impairment	-	403,591
Gain on revaluation of property	-	581,409
Closing net book amount	3,272,597	3,285,530

Impairment Losses – Property, Plant & Equipment

No impairments were made during the financial year (2024 - Nil).

A reversal of prior period impairment of \$403,591 and gain on revaluation of properties of \$581,409 was recognised during the year ended 30 June 2024 following a desktop review of the property values by an independent valuer on 12 August 2024.

Notes to the Financial Statements cont.

11 CURRENT LIABILITIES

		Consolidated Group	
		2025	2024
		\$	\$
(a) Trade and other payables			
Trade payables		22,291	48,719
GST and tax liabilities		(13,958)	(18,667)
Other payables and accruals		45,440	50,046
		53,773	80,098
(b) Unearned revenue		-	123,835
(c) Provisions			
Annual and long service leave provisions			
Opening balance at 1 July		50,620	58,513
Additional provisions		53,277	24,877
Amounts used		(56,765)	(32,770)
Balance at 30 June		47,132	50,620

The provision represents annual leave and long service leave obligations expected to be settled within 12 months of the balance date and are measured at the amounts expected to be paid when the liabilities are settled.

12 CONTRIBUTED EQUITY

		2025		2024	
		Notes	Number of securities	Number of securities	\$
(a) Share capital					
Ordinary shares fully paid	12b, 12d		60,299,561		60,299,561
Total contributed equity			60,299,561		60,299,561
(b) Movements in ordinary share capital					
Beginning of the financial year			281,860,377	281,660,377	60,289,696
Issued during the financial year:			-	200,000	10,000
Less: Transaction costs			-	-	(135)
End of the financial year			281,860,377	281,860,377	60,299,561

(c) Options

During the year there were no options issued or on issue.

(d) Ordinary shares

Ordinary shares entitle the holder to participate in dividends and the proceeds on winding up of the Company in proportion to the number of and amounts paid on the shares held.

On a show of hands every holder of ordinary shares present at a meeting in person or by proxy, is entitled to one vote, and upon a poll each share is entitled to one vote.

(e) Capital risk management

The Group's and the parent entity's objectives when managing capital are to safeguard their ability to continue as a going concern, so that they may continue to provide returns for shareholders and benefits for other stakeholders.

Due to the nature of the Group's activities, being mineral exploration, the Group does not have ready access to credit facilities, with the primary source of funding being equity raisings. Therefore, the focus of the Group's capital risk management is the current working capital position against the requirements of the Group to meet exploration programmes and corporate overheads. The Group's strategy is to ensure appropriate liquidity is maintained to meet anticipated operating requirements, with a view to initiating appropriate capital raisings as required. The working capital position of the Group at 30 June 2025 and 30 June 2024 are as follows:

Notes to the Financial Statements cont.

	Consolidated Group	
	2025 \$	2024 \$
Cash and cash equivalents	836,759	2,397,542
Trade and other receivables	92,184	171,837
Trade and other payables	(53,773)	(203,933)
Working capital position	875,170	2,365,446

13 RESERVES AND ACCUMULATED LOSSES

	Consolidated Group	
	2025 \$	2024 \$
(a) Reserves		
Share-based payments reserve		
Balance at beginning of year	2,522,549	2,081,501
Performance rights expensed	421,863	441,048
Balance at end of year	2,944,412	2,522,549
Revaluation reserve		
Balance at beginning of year	581,409	-
Gain on revaluation of property	-	581,409
Balance at end of year	581,409	581,409
(b) Accumulated losses		
Balance at beginning of year	(57,590,163)	(56,759,607)
Net (loss) for the year	(1,921,584)	(830,556)
Balance at end of year	(59,511,747)	(57,590,163)

	2025		2024	
	Number of securities	\$	Number of securities	\$
(c) Movements in performance rights				
Beginning of the financial year	26,000,000	2,522,549	8,666,669	2,081,501
2023 Tranche 1 lapsed	(8,666,665)	-	-	-
2023 Tranche 1, 2 & 3 amortisation	-	421,863	-	361,172
2023 Tranche 1 issues ¹	-	-	8,666,665	-
2023 Tranche 2 issues ²	-	-	8,666,666	-
2023 Tranche 3 issues ³	-	-	8,666,669	-
2021 Tranche 3 lapsed ⁴	-	-	(8,666,669)	-
2021 Tranche 2 & 3 amortisation	-	-	-	79,876
End of the financial year ³	17,333,335	2,944,412	26,000,000	2,522,549

Notes:

- (1) Tranche 1 Performance Rights: upon the Company's Shares reaching a 30 day VWAP which is greater than \$0.0622 per Share anytime during the period from 10 December 2023 to 10 December 2024; and continuous service of the Performance Rights holder in their capacity as a Director or Executive of the Company, or in a role as otherwise agreed by the Board of the Company, from the date of issue of the Performance Rights to 10 December 2024.
- (2) Tranche 2 Performance Rights: upon the Company's Shares reaching a 30 day VWAP which is greater than \$0.0684 per Share anytime during the period from 10 December 2024 to 10 December 2025; and continuous service of the Performance Rights holder in their capacity as a Director or Executive of the Company, or in a role as otherwise agreed by the Board of the Company, from the date of issue of the Performance Rights to 10 December 2025.
- (3) Tranche 3 Performance Rights: upon the Company's Shares reaching a 30 day VWAP which is greater than \$0.0746 per Share anytime during the period from 10 December 2025 to 10 December 2026; and continuous service of the Performance Rights holder in their capacity as a Director or Executive of the Company, or in a role as otherwise agreed by the Board of the Company, from the date of issue of the Performance Rights to 10 December 2026.
- (4) All previously remaining 2021 Performance Rights lapsed during 2024 without attaining the Performance Rights hurdles.

Notes to the Financial Statements cont.

14 DIVIDENDS

No dividends were paid during the financial year. No recommendation for payment of dividends has been made.

15 KEY MANAGEMENT PERSONNEL DISCLOSURES

Refer to the remuneration report contained in the directors' report for details of the remuneration paid or payable to each member of the Group's key management personnel ("KMP") for the year ended 30 June 2025.

The totals of remuneration paid to KMP of the company and the Group during the year are as follows:

	Consolidated Group	
	2025	2024
	\$	\$
Short-term benefits	1,169,524	1,160,120
Post-employment benefits	56,815	57,530
Share-based payments	421,863	441,048
	1,648,202	1,658,698

The Company has taken advantage of the relief provided by AASB 2008-4 Amendments to Australian Accounting Standard – Key Management Personnel Disclosures by Disclosing Entities and has transferred the detailed remuneration disclosures to the directors' report. The relevant information can be found in sections A-H of the remuneration report on pages 20 to 26.

Short-term employee benefits

These amounts include fees and benefits paid to the non-executive Chair and non-executive directors as well as all salary, paid leave benefits, fringe benefits, consultancy fees and cash bonuses awarded to executive directors and other KMP.

Post-employment benefits

These amounts are the current-year's superannuation contributions made during the year.

Share-based payments

These amounts represent the expense related to the participation of KMP in equity-settled benefit schemes as measured by the fair value of the options, rights and shares granted on grant date.

16 OPERATING SEGMENTS

The Consolidated Group has adopted AASB 8 Operating Segments with effect from 1 July 2009. AASB 8 which requires operating segments to be identified on the basis of internal reports about components of the Consolidated Group that are regularly reviewed by the chief operating decision maker in order to allocate resources to the segment and to assess its performance. The Consolidated Group operates in one operating segment and one geographical segment, being mineral exploration in Australia. This is the basis on which internal reports are provided to the Directors for assessing performance and determining the allocation of resources within the Consolidated Group.

Notes to the Financial Statements cont.

17 ASSOCIATES AND JOINT ARRANGEMENTS

HD Mining & Investment Pty Ltd

The Group has entered into a Farm-in arrangement with HD Mining & Investment Pty Ltd ("HDMI") to carry out exploration on tenements, and if warranted, to develop and exploit the tenements and carry out mining operations for the purpose of deriving production of Bauxite from them. HDMI has agreed to fund all costs to earn up to a maximum of 60% Participating Interest.

DevEx Resources Limited

Devex has withdrawn from the Farm-in arrangement following its initial spend and has relinquished its 50% interest in all non-bauxite rights within the ASQ Tenement.

18 REMUNERATION OF AUDITORS

		Consolidated Group	
		2025	2024
		\$	\$
(a) Audit services			
	Moore Australia Audit (WA) - audit and review of financial reports	26,092	25,310
	Moore Australia Audit (WA) – other audit services	-	-
	Total remuneration for audit services	26,092	25,310
(b) Non-audit services			
	Moore Australia (WA) – taxation services	-	-
	Total remuneration for other services	-	-

19 CONTINGENCIES

On 17 January 2019 the Company announced that it had executed a Term Sheet with Urban Resources for operating a direct shipping ore export venture. Included in the terms of this agreement is a contingent liability that the Company has to issue shares to Urban Resources if the following milestones are achieved.

- (a) commercially profitable shipments of 20,000 tonnes of silica sand from the Urban Resources Bullsbrook mine through the Fremantle Port to an overseas customer being completed. To receive a payment in shares in the Company equivalent to \$250,000 based on the 7 day VWAP on completion of the milestone; and
- (b) commercially profitable shipments of 20,000 tonnes of silica sand through the Albany Port to an overseas customer being completed. To receive a payment in shares in the Company equivalent to \$250,000 based on the 7 day VWAP on completion of the milestone.

Netley acquisition agreement includes in the terms a contingent liability that the Company has to issue up to 1,500,000 performance shares as detailed in Note 26(b). In addition to the Performance Shares ASQ agrees to pay to Netley a 1% net smelter royalty in respect of any minerals mined from the area within the boundaries of the Acquisition Tenements (for the avoidance of doubt excluding quartz and iron) and in respect of gold mined by the Purchaser on E77/2644 ('Royalty') on the terms and conditions set out in the royalty deed.

Notes to the Financial Statements cont.

20 COMMITMENTS

Consolidated Group		
	2025 \$	2024 \$
(a) Exploration commitments		
The Company has certain commitments to meet minimum expenditure requirements on the mineral exploration assets it has an interest in. Outstanding exploration commitments are as follows:		
within one year	566,126	577,013
later than one year but not later than five years	637,201	763,305
Later than five years	-	-
	1,203,327	1,340,318
(b) Commercial property lease commitments		
within one year	19,855	21,679
later than one year but not later than five years	-	-
Later than five years	-	-
Aggregate lease expenditure contracted for at reporting date but not recognised as liabilities	19,855	21,679
The property lease is cancellable with three months notice and rent payable monthly in advance.		

21 RELATED PARTY TRANSACTIONS

The only Related Party transactions were with members of the board and are disclosed in full in the Directors Report.

22 SUBSIDIARIES

Name	Country of Incorporation	Date of Incorporation	Class of Shares	Equity Holding	
				2025 %	2024 %
Darling Range Pty Ltd	Australia	10 June 2008	Ordinary	100	100
Braeburn Resources Pty Ltd	Australia	24 July 2007	Ordinary	100	100
Darling Range South Pty Ltd	Australia	13 November 2008	Ordinary	100	100
Bauxite Resources Pty Ltd	Australia	23 March 2009	Ordinary	100	100
BRL Operations Pty Ltd	Australia	16 February 2009	Ordinary	100	100
BRL Landholdings Pty Ltd	Australia	16 February 2009	Ordinary	100	100
Australian Silica Quartz Pty Ltd	Australia	25 March 2009	Ordinary	100	100
VA Holdings Pty Ltd	Australia	13 February 2009	Ordinary	100	100

23 EVENTS OCCURRING AFTER THE BALANCE SHEET DATE

No matters or circumstance have arisen since 30 June 2025 which significantly affected or could significantly affect the operations of the consolidated group in future financial years.

Notes to the Financial Statements cont.

24 CASH FLOW STATEMENT

Reconciliation of net profit or loss after income tax to net cash flows from operating activities

	Consolidated Group	
	2025 \$	2024 \$
Net (loss) for the year	(1,921,584)	(830,556)
Non cash Items		
Depreciation and amortisation	12,933	20,693
Share-based payments expense	421,863	441,048
Share-based tenement acquisition	-	10,000
Revaluation of property	-	(403,591)
	(1,486,788)	(762,406)
Movements in working capital, net of effects from purchase of controlled entities		
Decrease / (Increase) in trade and other receivables	79,654	1,234,863
Increase / (Decrease) in trade and other payables	(150,161)	(1,016,939)
Increase / (Decrease) in provisions	(3,488)	(7,893)
Net cash (outflow) from operating activities	(1,560,783)	(552,375)

25 EARNINGS PER SHARE

(a) Reconciliation of earnings used in calculating earnings per share

	Consolidated Group	
	2025 \$	2024 \$
Profit or loss attributable to the ordinary equity holders of the Company used in calculating basic and diluted earnings per share	(1,921,584)	(830,556)

(b) Weighted average number of shares used as the denominator

	Consolidated Group	
	2025 Number of shares	2024 Number of shares
Weighted average number of ordinary shares outstanding during the year used in calculating basic EPS	281,860,377	281,788,246
Weighted average number of dilutive options outstanding	-	-
Weighted average number of ordinary shares outstanding during the year used in calculating dilutive EPS	281,860,377	281,788,246

All performance rights on issue are considered anti-dilutive and have not been included in the calculation of diluted earnings per share.

Notes to the Financial Statements cont.

26 SHARE-BASED PAYMENTS

(a) Performance Rights

Market based vesting conditions were valued using a hybrid share option pricing model that simulates the share price of the Company as at the test date using a Monte-Carlo model. For non-market based vesting conditions no discount was made to the underlying valuation model. During the year there were no performance rights granted (2024 – 26,000,000). The ongoing amortisation of SBP expense was \$421,863 (2024: \$441,048) during the year.

During the financial period the following Performance Rights issued to Directors and Staff following approval of the Performance Rights Plan at the AGM held on 23 November 2023. The following Performance Rights were issued on 5 December 2023:

8,666,665 Tranche 1 Performance Rights

8,666,666 Tranche 2 Performance Rights

8,666,669 Tranche 3 Performance Rights

The Performance Rights vesting conditions are as follows:

Tranche 1 Performance Rights: upon the Company's Shares reaching a 30 day VWAP which is greater than \$0.0622 per Share anytime during the period from 10 December 2023 to 10 December 2024; and continuous service of the Performance Rights holder in their capacity as a Director or Executive of the Company, or in a role as otherwise agreed by the Board of the Company, from the date of issue of the Performance Rights to 10 December 2024.

Tranche 2 Performance Rights: upon the Company's Shares reaching a 30 day VWAP which is greater than \$0.0684 per Share anytime during the period from 10 December 2024 to 10 December 2025; and continuous service of the Performance Rights holder in their capacity as a Director or Executive of the Company, or in a role as otherwise agreed by the Board of the Company, from the date of issue of the Performance Rights to 10 December 2025.

Tranche 3 Performance Rights: upon the Company's Shares reaching a 30 day VWAP which is greater than \$0.0746 per Share anytime during the period from 10 December 2025 to 10 December 2026; and continuous service of the Performance Rights holder in their capacity as a Director or Executive of the Company, or in a role as otherwise agreed by the Board of the Company, from the date of issue of the Performance Rights to 10 December 2026.

	Grant Date	Granted Number	Vested Number as at 30 June 2025	Date vesting or vested and exercisable	Expiry Date	Exercise Price (cents)	Value per performance rights	Exercised Number
2023								
Tranche 1	23 Nov 2023	8,666,665	Nil	10 Dec 2024	1 Dec 2028	Nil	3.88c	Nil
Tranche 2	23 Nov 2023	8,666,666	Nil	10 Dec 2025	1 Dec 2028	Nil	3.93c	Nil
Tranche 3	23 Nov 2023	8,666,669	Nil	10 Dec 2026	1 Dec 2028	Nil	3.96c	Nil

Notes to the Financial Statements cont.

(b) Ordinary Shares and Performance Rights issued to acquire various mining tenements during the year.

On 11 August 2022 the Company announced that it had signed an Acquisition Agreement to acquire tenements and rights from Netley Minerals Pty Ltd ('Netley'). Included in the terms of this agreement was the issue of 5,000,000 shares as a total value of \$280,000 and a contingent liability that the Company is to issue up to 1,500,000 performance shares converting into \$1.5 million worth of fully paid ordinary shares to Netley at the 30 day VWAP price of ASQ shares at the time of the conversion or \$0.10 per share whichever is higher. There are 4 hurdles of which the first 3 hurdles to be achieved will each trigger 1/3 of the Performance Shares to be converted into fully paid ordinary shares. At this stage the probability of meeting the performance criteria is remote and the fair value of the Performance Shares has been assessed as nil.

Hurdles as follows:

- (i) Gold Hurdle – Performance Shares to the maximum value of \$500,000 will vest and be able to be converted into ordinary shares on the delineation of a JORC compliant (2012 edition) Inferred Mineral Resource Estimate of 50,000 ounces of contained gold at a minimum grade of 0.5g/t Au within any one or more of the Tenements comprising the Koolyanobbing Greenstone Belt Project. The number of shares to which the Performance Shares convert will be based off the volume weighted average share price of the Company over 20 consecutive days on which shares are traded, immediately prior to satisfaction of the Gold hurdle or \$0.10 per share, whichever is the higher;
- (ii) Nickel Hurdle – Performance Shares to the maximum value of \$500,000 will vest and be able to be converted into ordinary shares on the delineation of a JORC compliant (2012 edition) Inferred Mineral Resource Estimate of 4.0 Kt of contained nickel at a minimum grade of 0.5% Ni within any one or more of the Tenements comprising the Koolyanobbing Greenstone Belt Project. The number of shares to which the Performance Shares convert will be based off the volume weighted average share price of the Company over 20 consecutive days on which shares are traded, immediately prior to satisfaction of the Nickel hurdle or \$0.10 per share, whichever is the higher;
- (iii) Lithium Hurdle – Performance Shares to the maximum value of \$500,000 will vest and be able to be converted into ordinary shares on the delineation of a JORC compliant (2012 edition) Inferred Mineral Resource Estimate of 1,100 tonnes of contained lithium at a minimum grade of 1.0% Li₂O within any one or more of the Tenements comprising the Koolyanobbing Greenstone Belt Project. The number of shares to which the Performance Shares convert will be based off the volume weighted average share price of the Company over 20 consecutive days on which shares are traded, immediately prior to satisfaction of the Lithium hurdle or \$0.10 per share, whichever is the higher; and
- (iv) Copper Hurdle – Performance Shares to the maximum value of \$500,000 will vest and be able to be converted into ordinary shares on the delineation of a JORC compliant (2012 edition) Inferred Mineral Resource Estimate of 270 Mlbs of contained copper at a minimum grade of 0.5% Cu within any one or more of the Tenements comprising the Koolyanobbing Greenstone Belt Project. The number of shares to which the Performance Shares convert will be based off the volume weighted average share price of the Company over 20 consecutive days on which shares are traded, immediately prior to satisfaction of the Copper hurdle or \$0.10 per share, whichever is the higher

27 Fair Value Measurement

Fair value of freehold land and buildings have been determined as level 2 in the fair value hierarchy. The fair value of property assets adopted at 30 June 2024 is based on a desktop review of the property values by an independent valuer on 12 August 2024.

Consolidated Entity Disclosure Statement

At 30 June 2025

Name	Entity Type	Country of Incorporation	% of share capital held	Australian Tax residency status	Foreign Countries tax residency
Australian Silica Quartz Group Ltd	Body Corporate	Australia	N/A	Australian	N/A
Darling Range Pty Ltd	Body Corporate	Australia	100	Australian	N/A
Braeburn Resources Pty Ltd	Body Corporate	Australia	100	Australian	N/A
Darling Range South Pty Ltd	Body Corporate	Australia	100	Australian	N/A
Bauxite Resources Pty Ltd	Body Corporate	Australia	100	Australian	N/A
BRL Operations Pty Ltd	Body Corporate	Australia	100	Australian	N/A
BRL Landholdings Pty Ltd	Body Corporate	Australia	100	Australian	N/A
Australian Silica Quartz Pty Ltd	Body Corporate	Australia	100	Australian	N/A
VA Holdings Pty Ltd	Body Corporate	Australia	100	Australian	N/A

Directors' Declaration

In the opinions of the directors of Australian Silica Quartz Group Ltd (the "Company"):

- (a) the financial statements and notes and the remuneration disclosures that are contained in the Directors' Report, are in accordance with the Corporations Act 2001, including:
 - (i) complying with Australian Accounting Standards and the Corporations Regulations 2001; and
 - (ii) giving a true and fair view of the Company's and the consolidated entity's financial position as at 30 June 2025 and of its financial performance for the financial year ended on that date;
- (b) there are reasonable grounds to believe that the Company will be able to pay its debts as and when they become due and payable;
- (c) The consolidated entity disclosure statement for the Company and its controlled entities as at 30 June 2025 is true and correct.
- (d) the Directors have received the declarations required by Section 295A of the Corporations Act 2001 from the chief executive officer and chief financial officer for the financial year ended 30 June 2025; and
- (e) The financial statements comply with international financial reporting standards as disclosed in note 1.

This declaration is made in accordance with a resolution of the directors.



Robert Nash
Chairman

Perth, 18th September 2025

Independent Audit Report

To the members of Australian Silica Quartz Group Limited

Report on the Audit of the Financial Report

Opinion

We have audited the financial report of Australian Silica Quartz Limited (the Company) and its subsidiaries (the "Group"), which comprises the consolidated statement of financial position as at 30 June 2025, the consolidated statement of profit or loss and other comprehensive income, the consolidated statement of changes in equity and the consolidated statement of cash flows for the year then ended, and notes to the financial statements, including material accounting policy information, the consolidated entity disclosure statement and the directors' declaration.

In our opinion, the accompanying financial report of the Group is in accordance with the *Corporations Act 2001*, including:

- i. giving a true and fair view of the Group's financial position as at 30 June 2025 and of its financial performance for the year then ended; and
- ii. complying with Australian Accounting Standards and the Corporations Regulations 2001.

Basis for Opinion

We conducted our audit in accordance with Australian Auditing Standards. Our responsibilities under those standards are further described in the Auditor's Responsibilities for the Audit of the Financial Report section of our report. We are independent of the Group in accordance with the auditor independence requirements of the *Corporations Act 2001* and the ethical requirements of the Accounting Professional and Ethical Standards Board's APES 110 *Code of Ethics for Professional Accountants (including Independence Standards)* (the "Code") that are relevant to our audit of the financial report in Australia. We have also fulfilled our other ethical responsibilities in accordance with the Code.

We believe that the audit evidence we have obtained is sufficient and appropriate to provide a basis for our opinion.

Key Audit Matters

Key audit matters are those matters that, in our professional judgement, were of most significance in our audit of the financial report of the current period. These matters were addressed in the context of our audit of the financial report as a whole, and in forming our opinion thereon, and we do not provide a separate opinion on these matters.

Key audit matter	How the matter was addressed in our audit
------------------	---

Valuation of Property Assets

Refer to Note 10 Property, Plant and Equipment

At balance date, the book value of the Company's property assets amounted to \$3.27 million (2024: \$3.27 million).

This is considered a key audit matter due to the significance of the asset value and the use of judgement and estimation by management in their impairment assessment.

Management's assessment also incorporated an external market appraisal dated August 2024 by a licensed independent valuer and consideration of more current relevant factors and market conditions. The assessment included high level discussions between management and an independent expert that the carrying values are not impaired at balance date.

Our audit procedures included, amongst others:

- Reviewing minutes of meetings and discussion with management in respect of the properties' condition, their assessed values and assessing the reasonableness of key assumptions and estimation adopted.
- We reviewed recent independent valuations of both properties, which were undertaken by licence valuers.
- We performed online searches of comparable neighbouring properties that were either sold during the year or are currently advertised for sale to attain comfort over the existing book values.
- Assessing financial statement disclosures for appropriateness and adequacy

Share-based payments

Refer to Remuneration Report, Note 19 Contingencies & Note 26 Share-Based Payments

During the year ended 30 June 2025, the Group recognised the ongoing amortisation of share-based payments (SBP) amounting to \$421,863 awarded to Key Management Personnel (KMPs) and other parties during the prior financial year.

SBP remains a key audit matter due to it being a material transaction, the valuation of which involved several key assumptions and judgements adopted by both management and an independent valuer in the past.

Our procedures included, amongst others:

- Enquiring if there were any changes to the terms and conditions of the SBP to KMPs and obtaining KMP confirmations regarding the amounts expensed.
- Reviewing minutes of meetings, ASX announcements, agreements, & considered other transactions undertaken during the year.
- Testing the mathematical accuracy of the total SBP expensed during the financial year.
- For the SBP related to KMPs, we checked the methodology used by management & the independent valuer to estimate the fair value of equity instruments issued. This ensured the amounts expensed during the year were consistent with the prior year's valuation model.
- Evaluation of the independent valuer and their objectivity, competency and capabilities
- Considered the appropriateness of management judgement and estimation in assessing the value of other equities issued as part consideration for tenements acquired at \$Nil value. Rather, this has been disclosed as contingent liabilities.
- Assessing financial statement disclosures for appropriateness and adequacy

Other information

The directors are responsible for the other information. The other information comprises the information included in the Group's annual report for the year ended 30 June 2025 but does not include the financial report and our auditor's report thereon.

Our opinion on the financial report does not cover the other information and accordingly we do not express any form of assurance conclusion thereon.

In connection with our audit of the financial report, our responsibility is to read the other information and, in doing so, consider whether the other information is materially inconsistent with the financial report or our knowledge obtained in the audit or otherwise appears to be materially misstated.

If, based on the work we have performed, we conclude that there is a material misstatement of this other information, we are required to report that fact. We have nothing to report in this regard.

When we read the annual report, if we conclude that there is a material misstatement therein, we are required to communicate the matter to the directors and will request that it is corrected. If it is not corrected, we will seek to have the matter appropriately brought to the attention of users for whom our report is prepared.

Responsibilities of the Directors for the Financial Report

The directors of the Company are responsible for the preparation of:

- a) the financial report (other than the consolidated entity disclosure statement) that gives a true and fair view in accordance with Australian Accounting Standards and the *Corporations Act 2001*; and
- b) the consolidated entity disclosure statement that is true and correct in accordance with the *Corporations Act 2001*, and
- c) for such internal control as the directors determine is necessary to enable the preparation of:
 - i. the financial report (other than the consolidated entity disclosure statement) that gives a true and fair view and is free from material misstatement, whether due to fraud or error; and
 - ii. the consolidated entity disclosure statement that is true and correct and is free of misstatement, whether due to fraud or error.

In preparing the financial report, the directors are responsible for assessing the ability of the Group to continue as a going concern, disclosing, as applicable, matters related to going concern and using the going concern basis of accounting unless the directors either intend to liquidate the Group or to cease operations, or has no realistic alternative but to do so.

Auditor's Responsibilities for the Audit of the Financial Report

Our objectives are to obtain reasonable assurance about whether the financial report as a whole is free from material misstatement, whether due to fraud or error, and to issue an auditor's report that includes our opinion. Reasonable assurance is a high level of assurance but is not a guarantee that an audit conducted in accordance with the Australian Auditing Standards will always detect a material misstatement when it exists. Misstatements can arise from fraud or error and are considered material if, individually or in the aggregate, they could reasonably be expected to influence the economic decisions of users taken on the basis of this financial report.

A further description of our responsibilities for the audit of the financial report is located on the Auditing and Assurance Standards Board website at:

<https://www.auasb.gov.au/standards-guidance/auditor-s-responsibilities/>. This description forms part of our auditor's report.

Report on the Remuneration Report

Opinion on the Remuneration Report

We have audited the Remuneration Report as included in the directors' report for the year ended 30 June 2025.

In our opinion, the Remuneration Report of Australian Silica Quartz Limited, for the year ended 30 June 2025 complies with section 300A of the *Corporations Act 2001*.

Responsibilities

The directors of the Company are responsible for the preparation and presentation of the Remuneration Report in accordance with section 300A of the *Corporations Act 2001*. Our responsibility is to express an opinion on the Remuneration Report, based on our audit conducted in accordance with Australian Auditing Standards.



Neil Pace
Partner – Audit and Assurance
[Moore Australia Audit \(WA\)](#)
Perth
18th day of September 2025



Moore Australia Audit (WA)
Chartered Accountants

ASX Additional Information

Additional information required by Australian Stock Exchange Ltd and not shown elsewhere in this report is as follows, the information is current as at 28 August 2025:

(a) Voting rights

All ordinary shares (whether fully paid or not) carry one vote per share without restriction.

(b) Distribution of equity securities

Analysis of numbers of equity security holders by size of holding:

	Ordinary shares	
	Number of holders	Number of shares
1 – 1,000	51	10,900
1,001 – 5,000	92	345,176
5,001 – 10,000	185	1,560,300
10,001 – 100,000	540	19,710,255
100,001 and over	205	260,233,746
	1,073	281,860,377
The number of equity security holders holding less than a marketable parcel of \$500 (based on a 1.8 cents price) of securities are:	604	6,833,309

(c) Twenty largest shareholders

Holder name	Listed ordinary shares	
	Number of shares	Percentage of ordinary shares
1. One Managed Invst Funds Ltd <Sandon Capital Inv Ltd A/C>	44,368,020	15.74%
2. HD Mining & Investment Pty Ltd	19,700,000	6.99%
3. Big Fish Nominees Pty Ltd	18,095,237	6.42%
4. Tailrain Pty Ltd <The Childrens A/C>	17,016,667	6.04%
5. Dilkara Nominees Pty Ltd <Millwood Smith Family A/C>	11,300,000	4.01%
6. BNP Paribas Nominees Pty Ltd <Clearstream>	10,933,062	3.88%
7. Mr Robert Samuel Middlemas	10,379,075	3.68%
8. Jetosea Pty Ltd	7,142,855	2.53%
9. Mr Gregory Robert Hackshaw	5,149,667	1.83%
10. BNP Paribas Nominees Pty Ltd <IB AU Noms Retail Client>	5,089,931	1.81%
11. Netley Minerals Pty Ltd	5,000,000	1.77%
12. Jetosea Pty Ltd	4,562,244	1.62%
13. BNP Paribas Noms Pty Ltd	3,320,750	1.18%
14. Spectral Investments Pty Ltd <Lithgow Family A/C>	3,128,571	1.11%
15. Mr Dong Xing	3,099,438	1.10%
16. Mrs Annette Atkins	2,736,307	0.97%
17. Luke Atkins & Annette Atkins <The Atkins Super Fund>	2,666,666	0.95%
18. Lake Mcleod Gypsum Pty Ltd	2,229,512	0.79%
19. Mr Li Wan	2,147,341	0.76%
20. HSBC Custody Nominees (Australia) Limited	2,015,358	0.72%
	180,080,701	63.89%

ASX Additional Information cont.

(d) Substantial shareholders

The names of the substantial shareholders in accordance with section 671B of the Corporations Act 2001 are:

	Number of shares
Sandon Capital Pty Ltd	44,368,020
Luke Atkins and Associates	26,924,063
Neil Lithgow and Associates	22,385,148
HD Mining & Investments Pty Ltd	19,700,000

(e) Performance Rights

A total of 7 security holders (directors and employees) cumulatively held a total of 17,333,335 unquoted performance rights issued by ASQ with full details of those performance rights included in Note 13(c) of the Annual Report. The performance rights have no voting rights. No individual holds more than 20% of the performance rights.

(f) Restricted Securities

There were no restricted securities or securities subject to voluntary escrow on issue.

(g) On Market Buy-back

There was no current on market buy-back.

(h) Other Items

There were no issues of securities approved for the purposes of item 7 section 611 of the Corporations Act which have not been completed.

No securities were purchased on-market during the Reporting Period under or for the purposes of any employee incentive scheme or to satisfy the entitlements of the holders of options or other rights to acquire securities granted under an employee incentive scheme.

(i) Schedule of interests in mining tenements (as at 28 August 2025)

ASQG TENEMENTS (100%)

ASQG retain 100% interest in the following tenements (all granted unless marked "Pending")

Tenement	Location	Tenement	Location
Gingin Silica Project		South Stirling Project	
E70/5144	Warbrook (Pending)	E70/5528	South Stirling
Albany Silica Project		North Queensland Hardrock Quartz Projects	
E70/5262	Cheyne	EPM 26702	Mt Eliza
Koolyanobbing Metals Project		EPM 26727	EPM 26727
E77/2400	Kooly Far South	EPM 26741	Douglas Range
E77/2645 ¹	Yilgarn - Lake Seabrook	EPM 28954	Quartz Blow Creek
E77/2675 ¹	Yilgarn	EPM 28998	Mount Cook
E77/2684	Lake Seabrook	EPM 28999	Mount Juliet
E77/2941	Lake Deborah (Pending)		
E77/3021	Lake Deborah South (Pending)		

Note 1: ASQ hold all mineral rights excluding iron.

HD MINING & INVESTMENTS JOINT VENTURE TENEMENTS

The JV requires HD Mining to fund 100% of all exploration and feasibility costs to earn up to 60% of the bauxite rights. HD Mining is currently working towards obtaining 40% interest in the bauxite rights on the tenements below. This will be triggered if HD Mining enters into a binding commitment to undertake a feasibility study on the tenements. Should HD Mining and ASQG make a decision to mine, HD Mining will earn an additional 20% interest in bauxite rights. ASQG maintains 100% interest in other minerals. At the date of this report ASQG still has 100% interest in these tenements.

Tenement	Location
Darling Range Tenements (Granted)	
E70/3405	Victoria Plains
E70/3179	Congelin
E70/3180	Dattening
E70/3890	Wandering



**Australian
Silica Quartz**
Group Ltd

ABN 72 119 699 982

Suite 10 / 295 Rokeby Road

SUBIACO WA 6008

admin@asqg.com.au

www.asqg.com.au